

**TO:** ALA Executive Board

**RE:** *Librarian Retirements and ALA Membership, Tordella and Godfrey study*

**ACTION REQUESTED/INFORMATION/REPORT:**

*Report on findings.*

**ACTION REQUESTED BY:**

*Denise M. Davis, Director, ALA Office for Research & Statistics and Stephen Tordella, Decision Demographics*

**CONTACT PERSON:** Denise M. Davis, [dmdavis@ala.org](mailto:dmdavis@ala.org) 312-280-4273

**DRAFT OF MOTION:**

**DATE:** *Monday, July 13, 2009 at 3:00pm*

**BACKGROUND:**

*Stephen Tordella and Tom Godfrey, principals at Decision Demographics, were asked to assist ALA in exploring membership trends as part of the request from the Presidential Task Force on Graduated Dues. Preliminary estimates regarding the profession were presented to the Executive Board at its April 2009 meeting. This presentation applies the estimates to ALA membership and suggests some career patterns that should be considered in future strategic planning activities.*

Attachments: Handout of presentation slides

Slide 1



DECISION DEMOGRAPHICS

---

# **Librarian Retirements and ALA Membership**

**Stephen Tordella**

**Tom Godfrey**

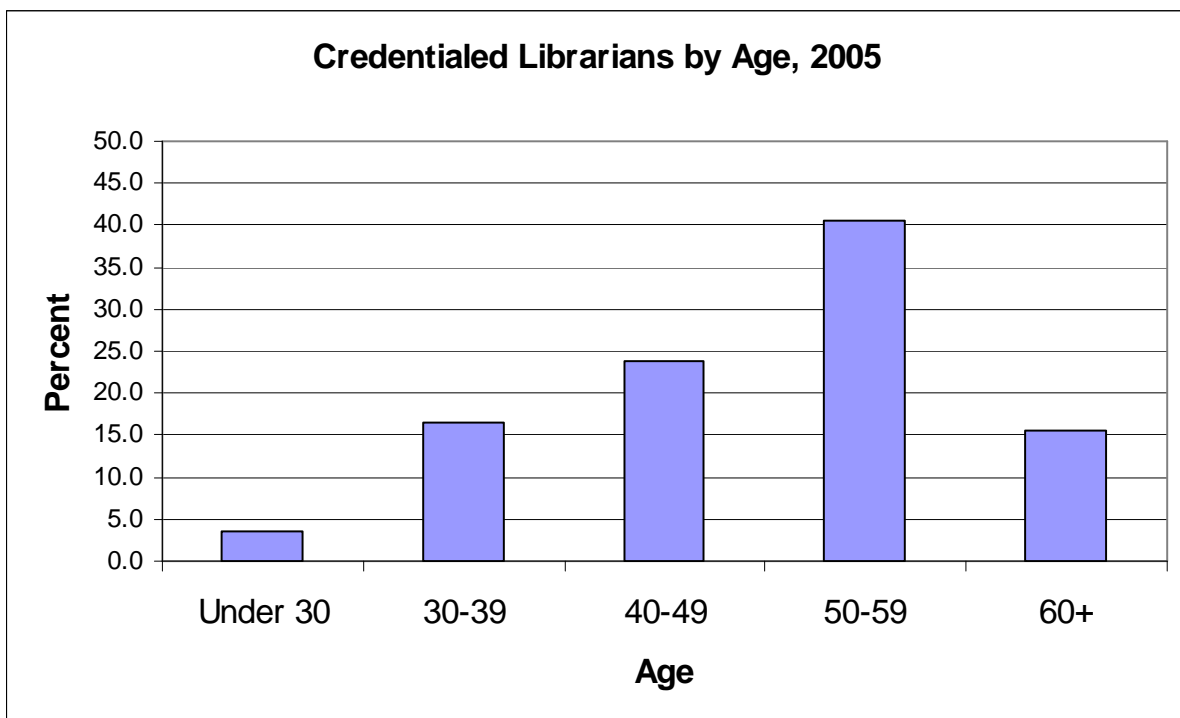
**Presentation to the  
American Library Association  
Executive Board  
Monday, July 13, 2009**

Slide 2

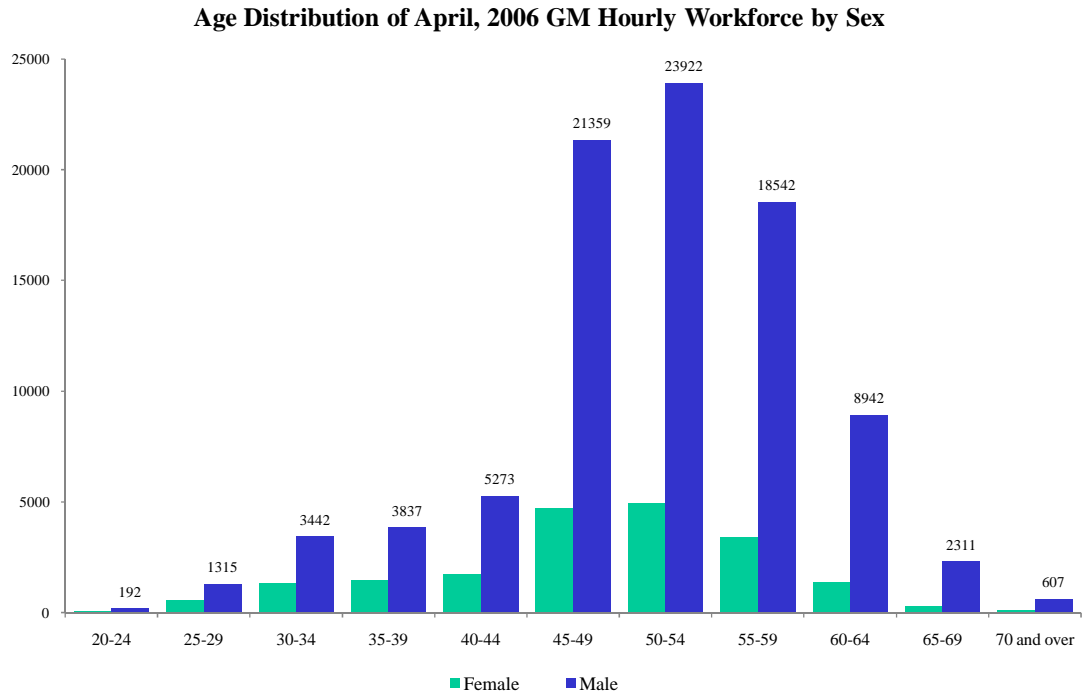
## Librarian Age Composition



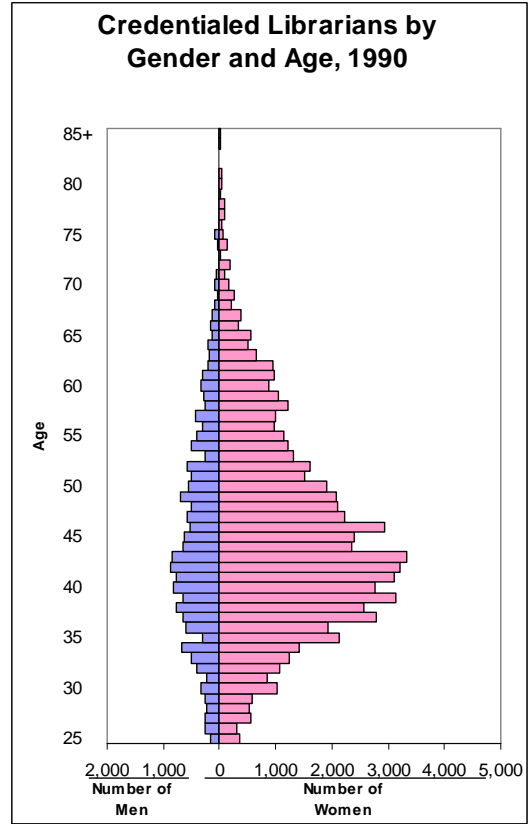
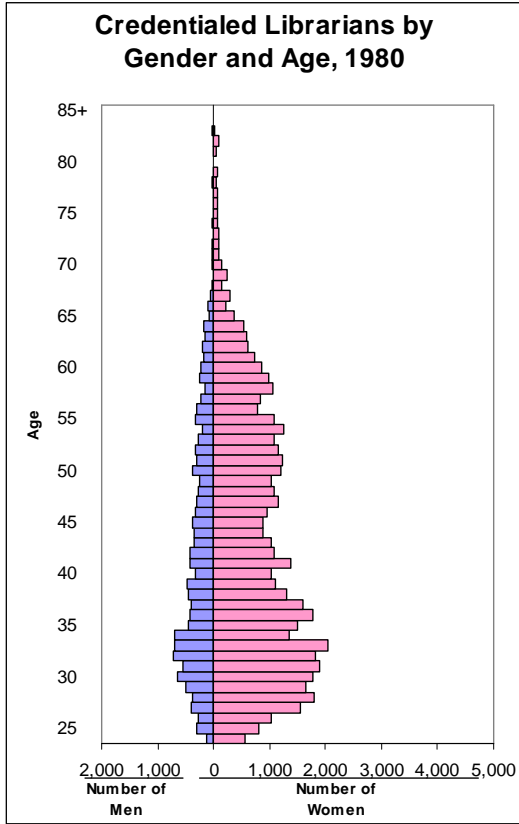
Slide 3

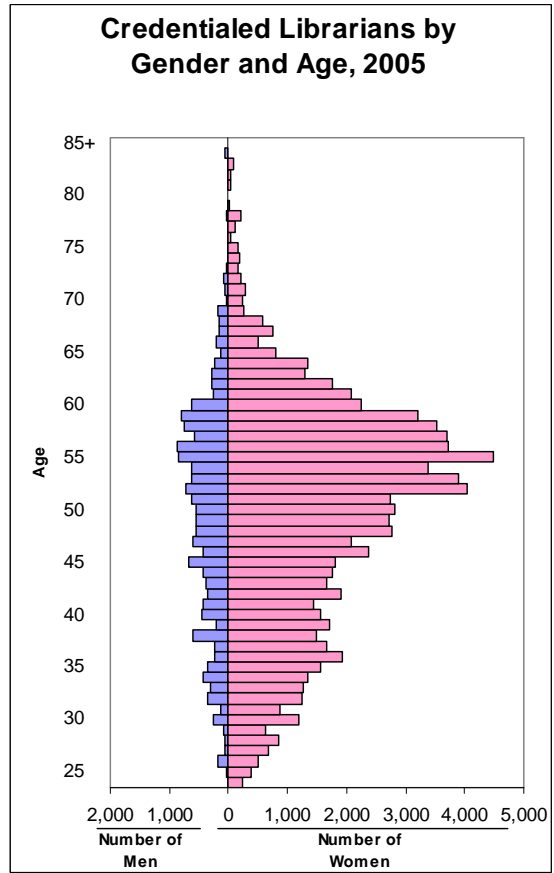
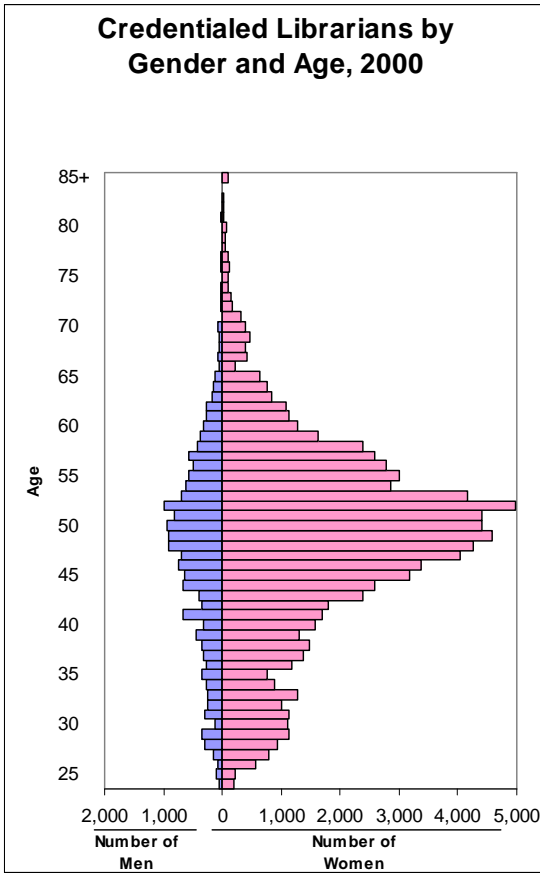


## GM Auto Workers by Age and Sex, 2006



Source: "How the 2006 Special Attrition Package Reshaped General Motors" Katharine A. Frohardt-Lane, General Motors; Hallie J. Kintner, University of Michigan; Dana B. Kamerud, General Motors



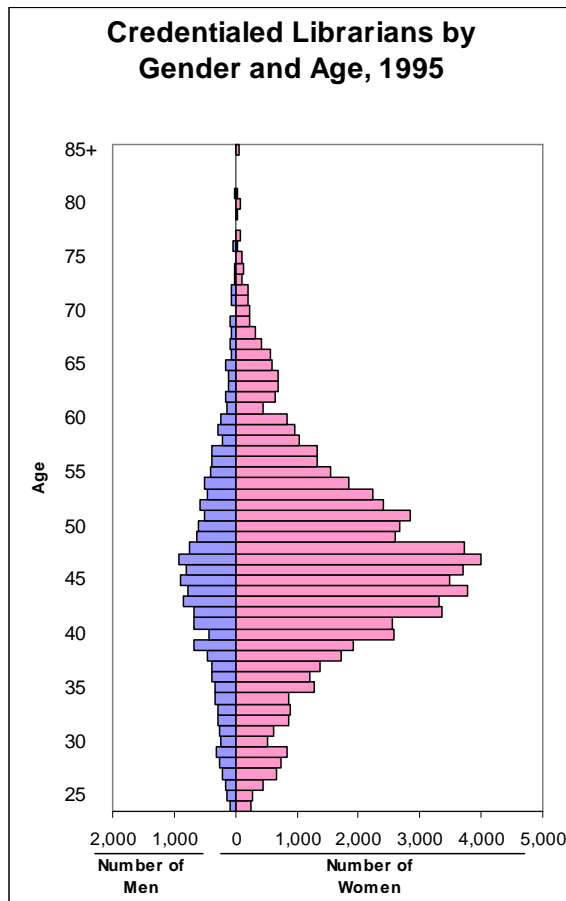


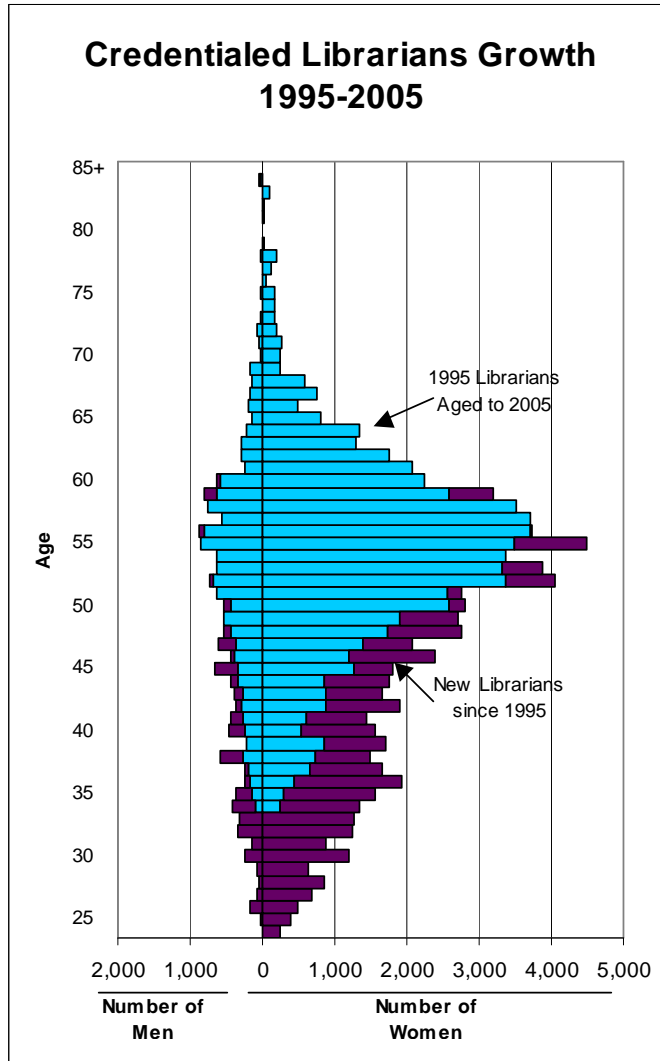
Slide 7

## Net Joiners and Retirees

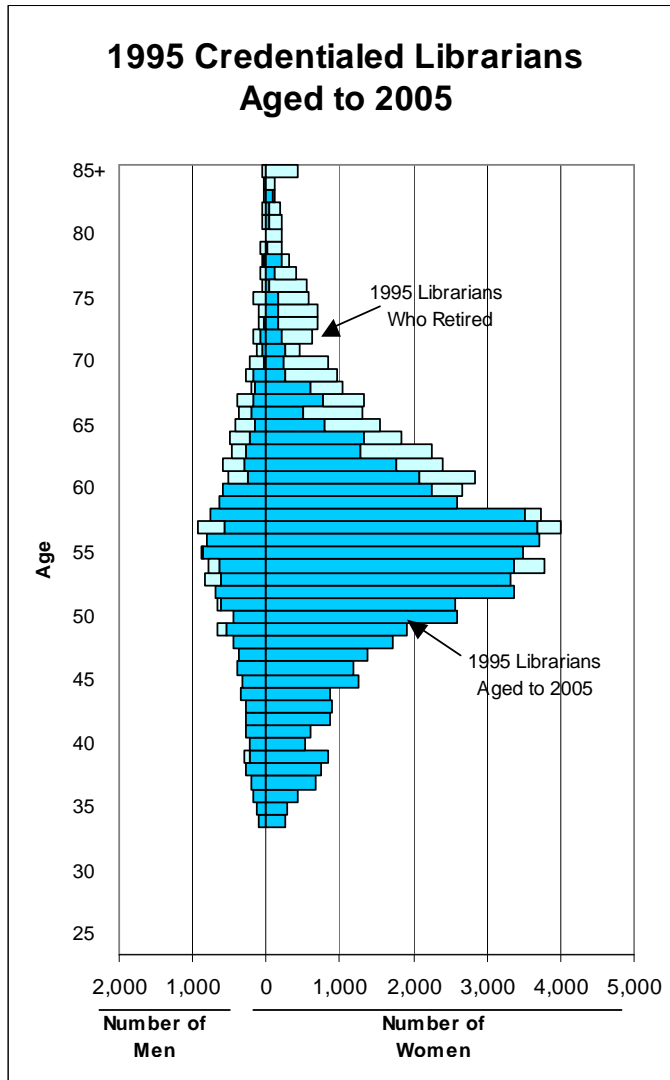


Slide 8





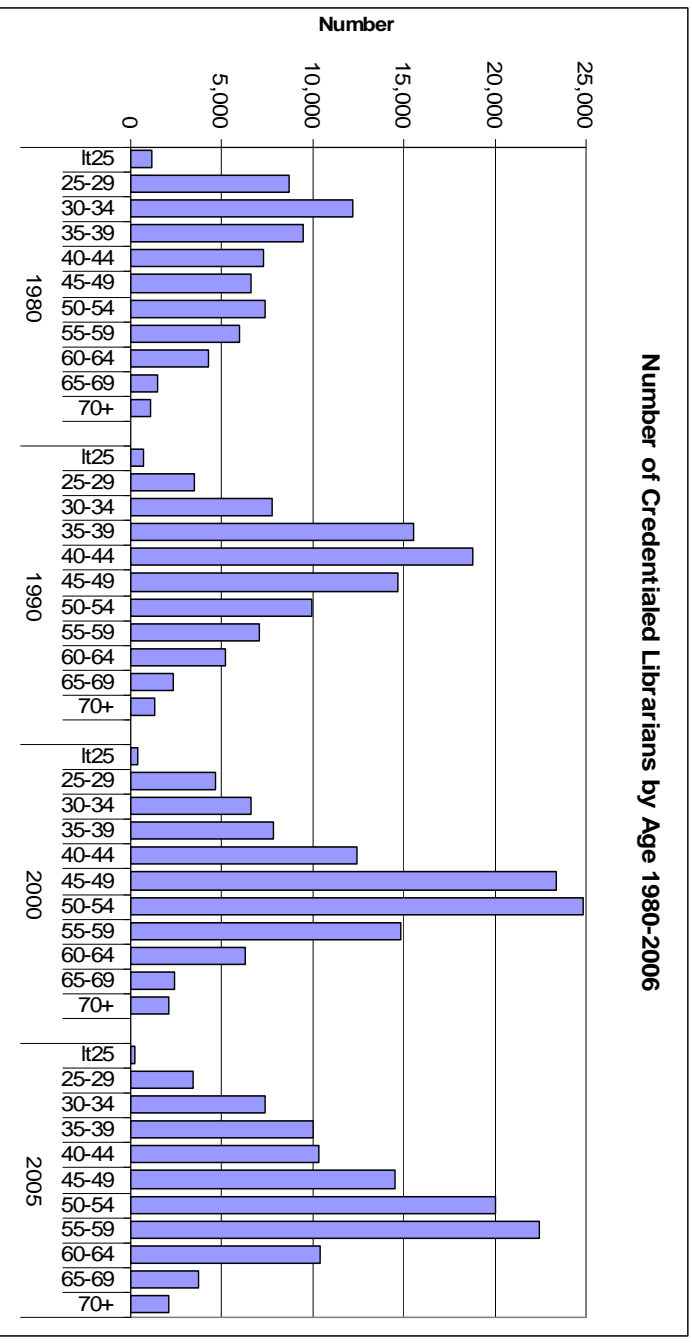




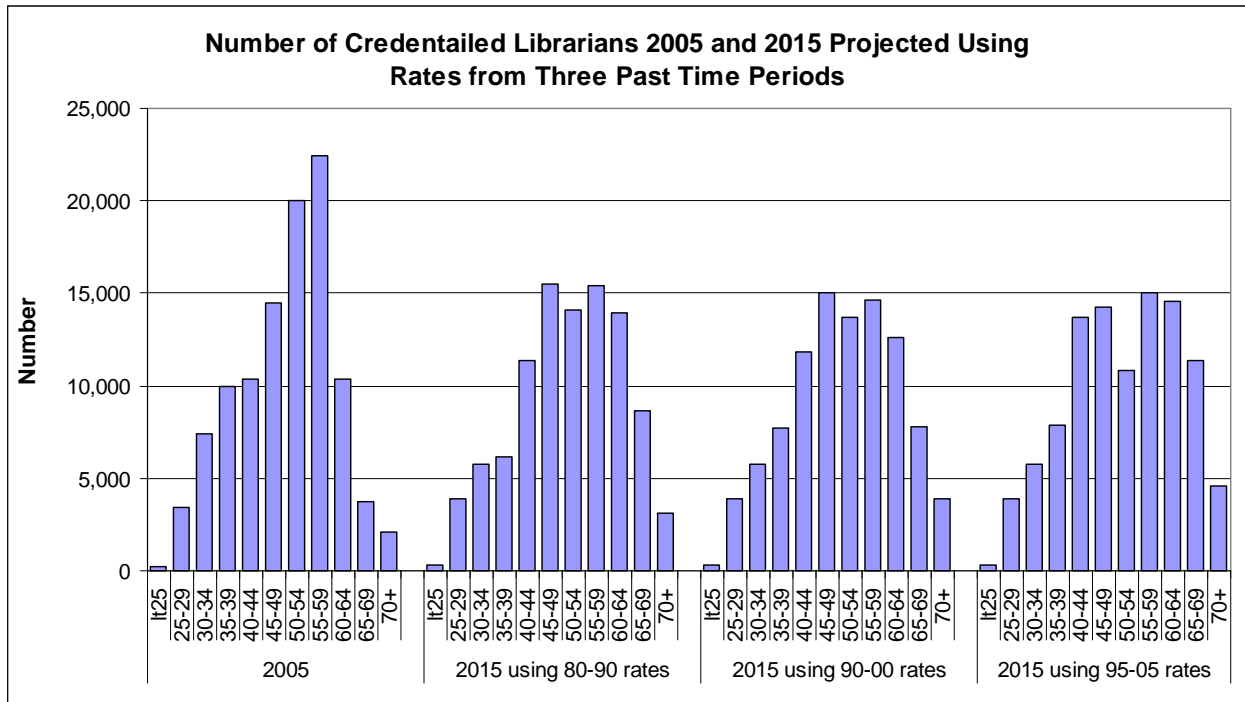
## Projection Results

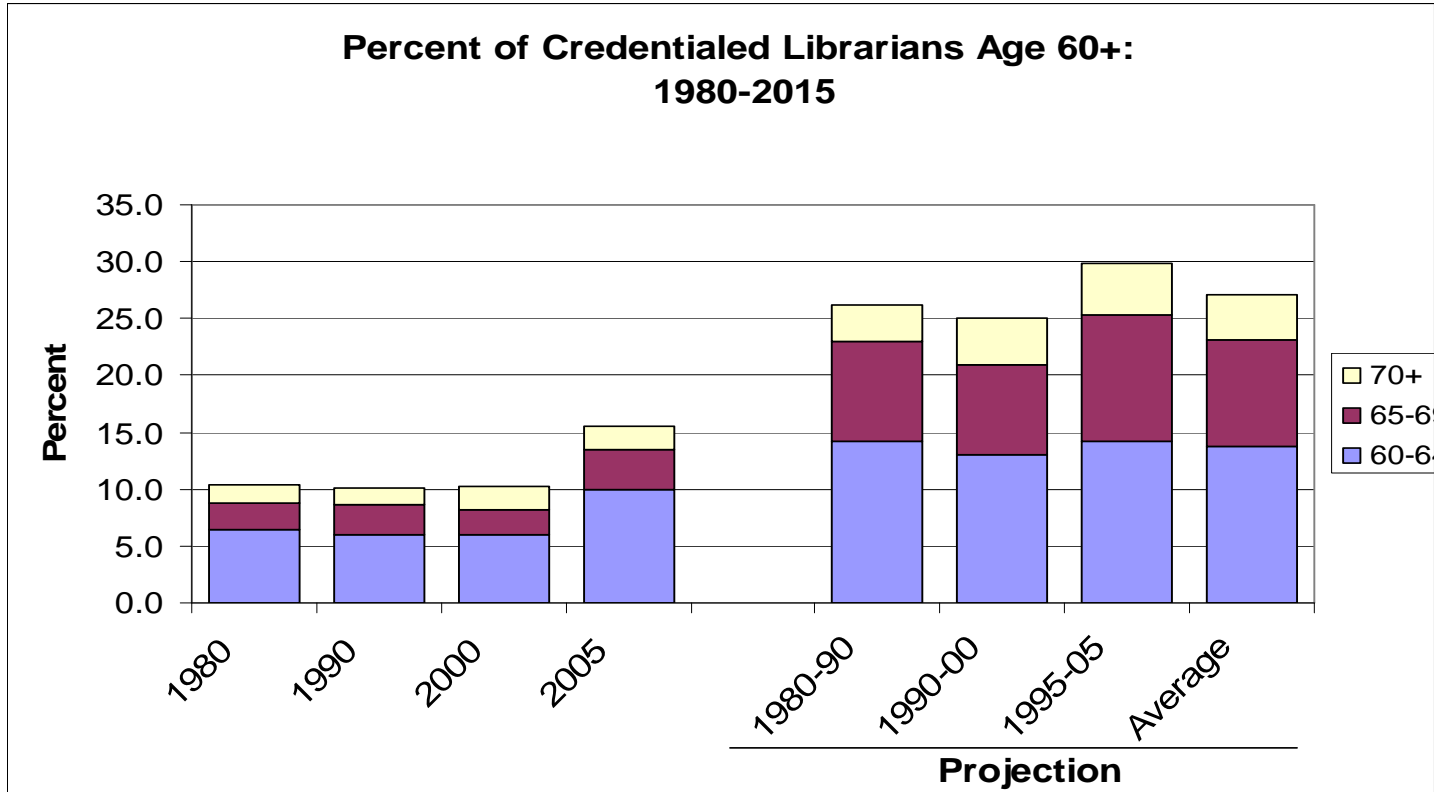


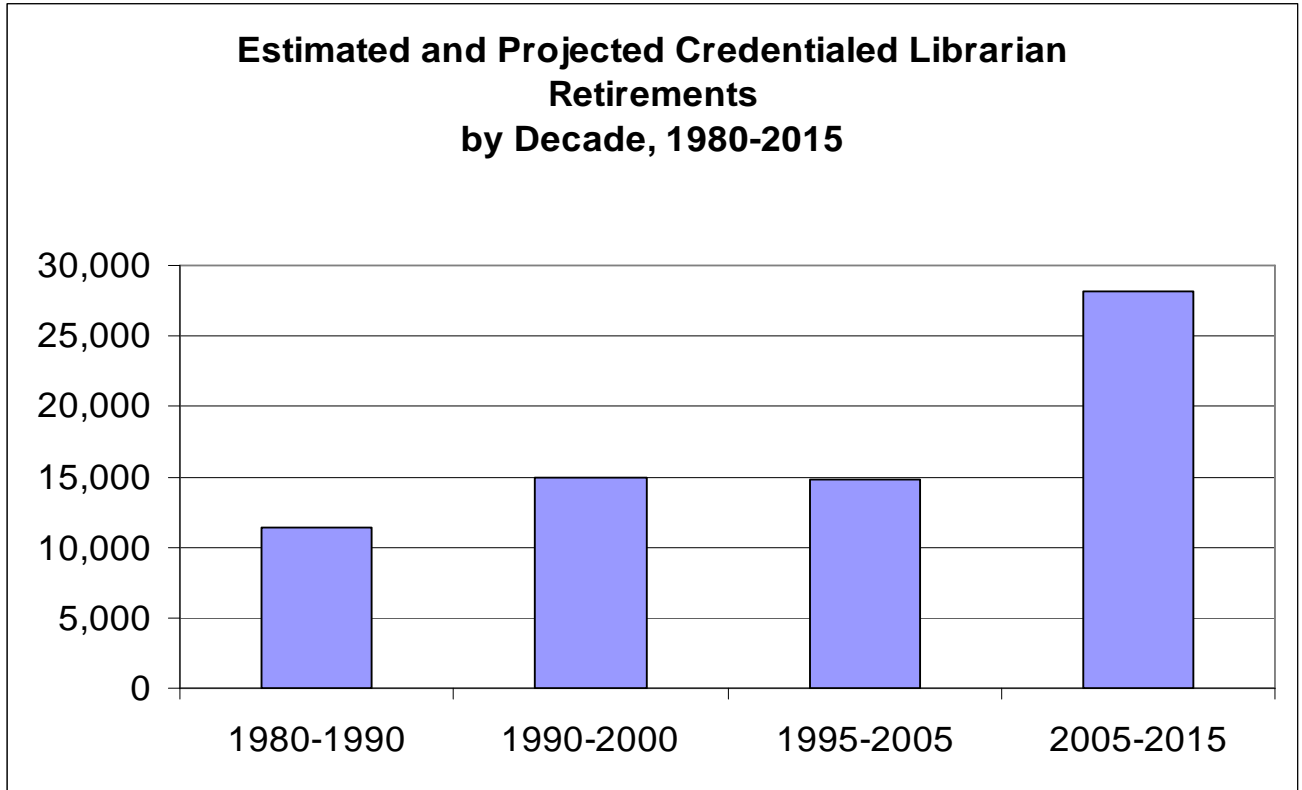
## Historic Data



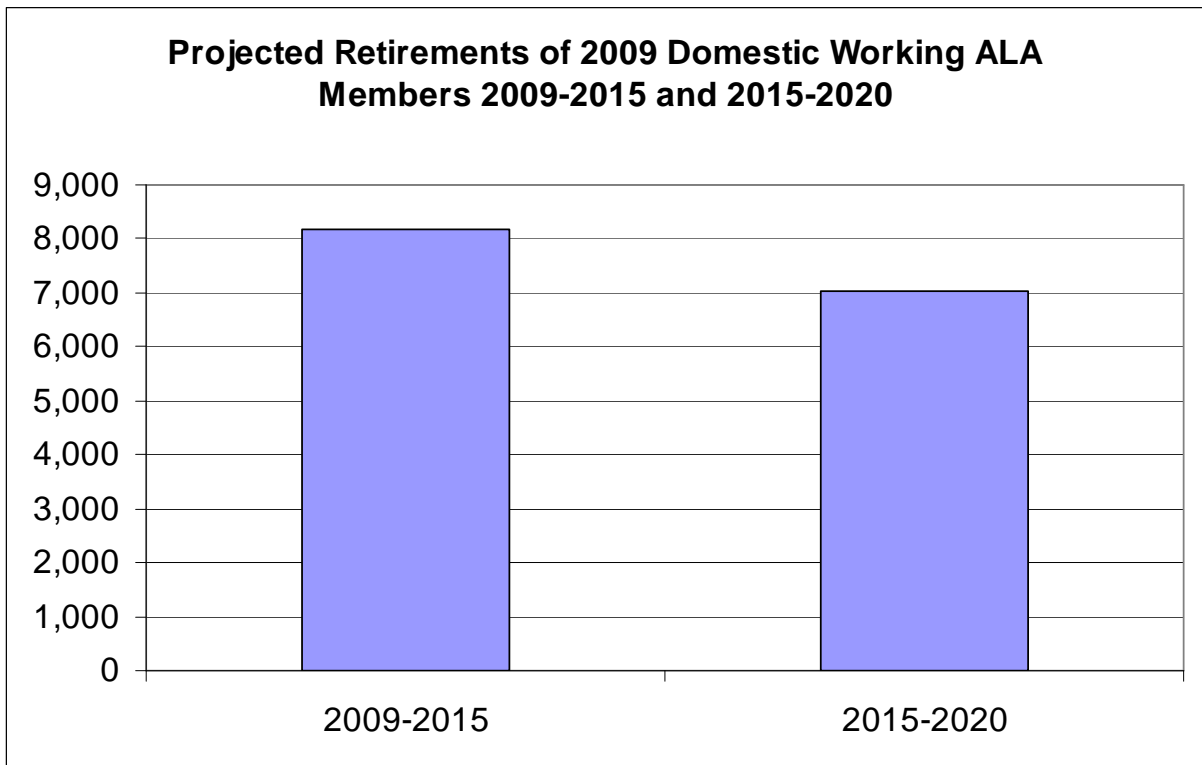
## Projected 2015 Data







## Member Retirement Projections



## Anticipated Member Retirements 2009 to 2020

