

Snapshot: Public Library Technology Lending & Outreach

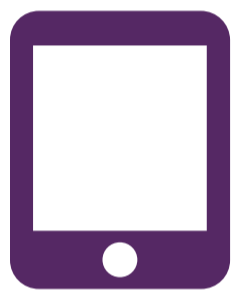
U.S. public libraries serve as digital equity hubs in communities of all sizes, with roughly 17,000 locations managed by more than 9,000 administrative entities. In Fall 2020, the Public Library Association, a division of the American Library Association, fielded the **2020 Public Library Technology Survey** to a national sample of public library directors at the administrative entity level. Data provided here is the most recent and representative data related to U.S. public library circulation of technology to library patrons and mobile technology outreach, such as through "cybermobiles" or mobile technology labs.



Laptops for check out

Percentage of Libraries Offering Service

National	16.7%
City	21.4%
Suburb	17.6%
Town/Rural	16.0%



Tablets for check out

National	15.0%
City	22.2%
Suburb	17.0%
Town/Rural	13.7%



Hotspots for check out

National	32.6%
City	51.8%
Suburb	47.4%
Town/Rural	25.5%



Mobile Technology Outreach

National	16.0%
City	47.1%
Suburb	20.7%
Town/Rural	11.9%

Data presented are based on more than 1,500 responses to the PLA's nationally representative 2020 Public Library Technology Survey. Libraries were designated City, Suburb, and Town/Rural according to the [National Center for Education Statistics' 2019 Locale methodology](#).

For more information, please visit www.ala.org/pla/data.

Published June 2021