

# base line

*a newsletter of the*

**Map and Geospatial Information Round Table**

## **TABLE OF CONTENTS**

- 3 From the Chair**
- 5 On the Cataloging/Cataloguing Front**
- 18 MAGIRT's Preconference Workshop on DCRM(C)!**
- 19 MAGIRT Core Competencies Task Force**
- 20 NGAC - Notes**
- 22 MAGIRT Exec Minutes - Oct 2016**
- 27 New Maps and Cartographic Materials**
- 32 Great Moments in Map Librarianship**

<http://www.ala.org/magirt/>

**Volume 38, Number 1**  
**February 2017**



**base line** is an official publication of the American Library Association's Map and Geospatial Information Round Table (MAGIRT). The purpose of **base line** is to provide current information on cartographic materials, other publications of interest to map and geography librarians, meetings, related governmental activities, and map librarianship. It is a medium of communication for members of MAGIRT and information of interest is welcome. The opinions expressed by contributors are their own and do not necessarily represent those of the American Library Association and MAGIRT. Contributions should be sent to the appropriate editor listed below.

**Editor:** John A. Olson  
Government and Geo-Information Librarian  
Syracuse University  
Tel: 315-443-4818 E-mail: [jaolson@syrr.edu](mailto:jaolson@syrr.edu)

**Distribution Manager:** Sandy Schiefer  
Government Documents and Political Science Librarian  
University of Missouri, Columbia  
Tel: 573-884-8123, E-mail: [SchieferS@missouri.edu](mailto:SchieferS@missouri.edu)

**Cataloging Editor:** Tammy T. Wong  
Cartographic Materials Cataloger  
Geography and Map Division, Library of Congress  
Tel: 202/707-6735 E-mail: [twon@loc.gov](mailto:twon@loc.gov)

**Electronic Mapping Editor:** Carol McAuliffe  
Map Librarian  
Map & Imagery Library, University of Florida  
Tel: 352/273-2828 E-mail: [carolmc@uflib.ufl.edu](mailto:carolmc@uflib.ufl.edu)

**New Maps and Books Editor:** David J. Bertuca  
Map Librarian, Science & Engineering Information Center  
University at Buffalo  
Tel: 716/645-1332 E-mail: [dbertuca@buffalo.edu](mailto:dbertuca@buffalo.edu)

**Membership and Marketing Committee Chairperson:**  
**Andrew Battista**  
Librarian for Geospatial Information Systems  
New York University  
Tel: 212/992-7312 E-mail: [ab6137@nyu.edu](mailto:ab6137@nyu.edu)

**Advertising Rates:** For one issue: full page \$100; half page \$50; quarter page \$25. Opposite "Great Moments in Map Librarianship": full page \$150; half page \$80; quarter page \$40.

Send graphic (.AI, .PDF 300 dpi or better) or word processing file (Times New Roman 12 point) as an email attachment to the editor or mail hard copy to editor. Submissions will be re-formatted to the extent necessary to fit the size and proportion requested. Consider that the final size and proportion of a full page is 8 x 10 inches. Advertisers will be invoiced. Mail checks to the MAGIRT Treasurer, payable in U.S. dollars to ALA-MAGIRT.

**base line** is published electronically six times a year: in February, April, June, August, October, and December. Single printed pre-2008 issues of **base line** are available at a cost of \$5.00 per issue, U.S. and Canadian orders; \$7.00 per issue for all other foreign orders. Checks, payable to the American Library Association, should be mailed to Jim Coombs, **base line** Production Manager, Maps Library, Missouri State University, 901 S. National, #175, Springfield, MO 65804-0095.

Members of MAGIRT can access **base line** as a benefit of their memberships.

American Library Association personal and institutional members may choose MAGIRT membership for \$20.00 (personal) or \$60.00 (institutional) by so advising the American Library Association, 50 W. Huron St., Chicago, IL 60611.

#### MAGIRT OFFICERS:

**Chairperson:**  
Louise Ratliff  
Social Sciences and Map Catalog Librarian  
UCLA  
Phone: 310/206-5853 E-mail: [lratliff@library.ucla.edu](mailto:lratliff@library.ucla.edu)

**Vice-Chairperson (Chair-Elect):**  
Leslie Wagner  
Metadata Archivist  
Univ of Texas-Arlington  
Tel: 817/272-6209 E-mail: [leslie.wagner@uta.edu](mailto:leslie.wagner@uta.edu)

**Secretary:**  
Catherine Hodge  
Monograph & Cartographic Resources Cataloging Librarian  
The University of Iowa  
Tel: 319-335-6295 E-mail: [catherine-hodge@uiowa.edu](mailto:catherine-hodge@uiowa.edu)

**Treasurer:**  
Susan Moore  
Cataloging/Metadata Unit Coordinator  
University of Northern Iowa  
Tel: 319/273-3787 E-mail: [susan.moore@uni.edu](mailto:susan.moore@uni.edu)

**Assistant Treasurer:**  
Maggie M. Long  
Adjunct Assistant Curator, KARMS, Division of Libraries,  
New York University  
Tel: E-mail: [longmml88@gmail.com](mailto:longmml88@gmail.com)

**Past Chairperson:**  
Elizabeth Cox  
Coordinator of Cataloging and Metadata  
Southern Illinois University  
Tel: 618/453-5594 E-mail: [bcox@lib.siu.edu](mailto:bcox@lib.siu.edu)

<http://www.ala.org/magirt/>

© American Library Association 2017

312.944.6780

Published by the Map and Geospatial Information Round Table



## FROM THE CHAIR

LOUISE RATLIFF

UCLA

The ALA Midwinter Meeting in Atlanta, GA took place on January 20-23, during stormy days, the Presidential Inauguration, the Women's March, and the Super Bowl playoff game. That made our meetings seem pretty tame, which was perhaps a good thing since they were a pleasant professional distraction from events happening on the national stage. Tame they were, but productive too. I want to shout out special thanks to all of the MAGIRT members who chaired committees, interest groups and discussion groups, and whose minutes and reports appear elsewhere in this issue of base line. Without you, we would not exist!



Extra special thanks to vice-chair Leslie Wagner for arranging a visit to Georgia State University's fabulous CURVE (Collaborative University Research & Visualization Environment), an innovative space whose mission is to "enhance research and visualizations by providing technology and services that promote interdisciplinary engagement, collaborative investigation, and innovative inquiry." Attendees enjoyed amazing digital presentations, including maps, on a 16-foot wide wall! A Dutch-treat dinner followed at Der Biergarten, which also offered us a fine selection of savory German beers.

Past chair Beth Cox has put together a slate of candidates for the two officer positions up for election this year: 2 candidates for Vice-Chair/Chair-Elect and 2 candidates for Assistant Treasurer. ALA elections will open on Monday, March 13, 2017.

Speaking about ALA, as you may know by now the scheduling for Annual 2018 in New Orleans will be quite different from what we are used to. Programs and discussion group sessions will normally be allotted one hour, except for the 8:30-10 am and 4-5:30 pm time slots. Each Round Table will be allowed one "chair's program" and one discussion group session by default. All program proposals will be reviewed and voted on by a jury; "our" jury will evaluate proposals from both ALA committees and round tables. Committee meetings will be scheduled during a defined set of hours, spread out from Friday through Tuesday. All the details are not yet clear, but we will learn more soon.

BOTTOM LINE: We must review our needs and desires for meetings at ALA Annual. We will probably need to consolidate or combine into fewer and shorter time slots with more focused agendas and topics. Program planning must begin right away, since program proposals must be submitted starting in late April, and will be approved in September. Please send your comments to me as chair ([lratliff@library.ucla.edu](mailto:lratliff@library.ucla.edu)), Leslie Wagner as next year's chair ([leslie.wagner@uta.edu](mailto:leslie.wagner@uta.edu)), or to any committee chair or group coordinator. The Executive Board will be monitoring this process closely.

Meanwhile, programming for ALA Annual 2017 is coming along nicely. Our pre-conference is scheduled for Friday morning, June 23 on cataloging maps using DCRM(C), and our Saturday afternoon 2-part program will be "Mapping the Generations: Visualizing Family History with Maps," co-sponsored by RUSA (Reference & User Services Association). More detailed information will be available soon here <https://magirt.github.io/ALA2017/> and on the MAGIRT website.

Finally, I want to ask everyone to propose speakers whom we could ask to present webinars for us. Education chair Anne Zald and her committee have scheduled 2 upcoming webinars, and we would like to offer more. Please contact Anne with your suggestions at [anne.zald@northwestern.edu](mailto:anne.zald@northwestern.edu).

Please feel free to contact me with your questions or concerns at [lratliff@library.ucla.edu](mailto:lratliff@library.ucla.edu).

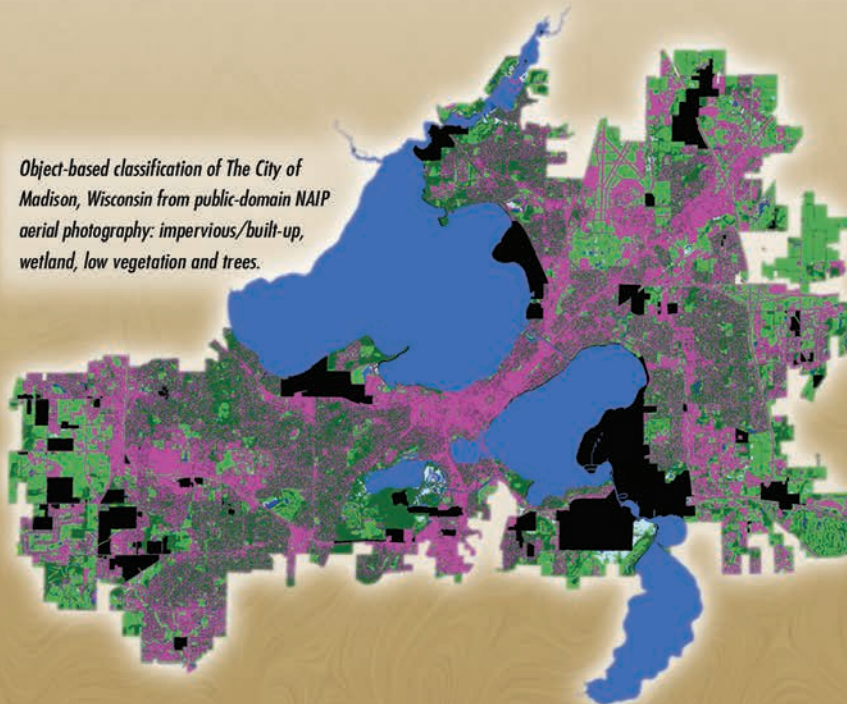


Global Aerial/Satellite Imagery & Value-Added Remote Sensing Solutions  
Extensive Foreign Mapping Datasets – Off-the-Shelf & Custom



**SATELLITE & AERIAL IMAGERY/PROCESSING**  
**DIGITAL ELEVATION MODELS • VECTOR FEATURE EXTRACTION**  
**SPECTRAL CLASSIFICATION & OBJECT-BASED IMAGE ANALYSIS**

*Object-based classification of The City of  
Madison, Wisconsin from public-domain NAIP  
aerial photography: impervious/built-up,  
wetland, low vegetation and trees.*



## **GLOBAL TOPOGRAPHIC MAPS & NAUTICAL CHARTS**

Discounted countrywide DRG, vector, DEM and paper map sets

## **MAP LIBRARY SERVICES**

Large-format scanning, geo-referencing, metadata & index creation

*Contact us for New Datasets & Academic Discounts*

AIRBUS DEFENCE & SPACE Image Partner • DigitalGlobe Distribution Partner • Authorized Valtus Reseller • Authorized Intermap Distributor  
USGIF Member • USGS Business Partner • Esri® Business Partner • Planet Labs/RapidEye Direct Distributor

**tel +1.303.790.9730 • fax +1.303.790.9734**  
**sales@landinfo.com • www.landinfo.com**



---

---

# ON THE CATALOGING/CATALOGUING FRONT

TAMMY WONG

LIBRARY OF CONGRESS

---

## **MAGIRT Cataloging and Classification Committee (CCC)**

Sunday, January 22, 2017 10:30-11:30am

Iris Taylor called the meeting to order at 10:30 am. She welcomed all the attendees to the CCC meeting. There were 15 attendees in total. Members present: Catherine Hodge, Nancy Kandoian, Susan Moore, Tim Kiser, Louise Ratliff, Iris Taylor, Tsering Wangyal Shawa, Jay Weitz, Tammy Wong, and Min Zhang.

### **1. Call to order (Iris Taylor)**

Iris Taylor was presiding over this meeting to substitute for CCC Chair Carolyn Kadri due to a family emergency.

### **2. Welcome and introductions**

CCC members and guests introduced themselves.

### **3. baseline cataloging editor report (Tammy Wong)**

The minutes from CCC meeting held at ALA Annual, in June, 2016, were approved as published on page 5 of the August 2016 baseline. See

<http://www.ala.org/magirt/sites/ala.org.magirt/files/content/publicationsab/baseline/BL37-4c.pdf>

### **4. ALCTS CaMMS/MAGIRT Cartographic Resources Cataloging Interest Group report (Iris Taylor)**

#### **ALCTS CaMMS/MAGIRT Cartographic Materials Cataloging Interest Group**

ALA Midwinter Meeting, Atlanta – Sunday, January 22, 2017

Discussion topics included:

- Usage of linking fields 76x/78x fields in map records, including the kinds of linking situations we most commonly come upon, and how to handle them properly. Use of 775/776 for facsimiles and reproductions. A question arose as to how LC treat reproduction. LC adopt the broadest definition of reproduction that includes facsimiles, reprints, republications, etc. LC uses the linking entries 775 when the library has the original and if it is already cataloged. We recorded the original LCCN in subfield w. In cases when we are not sure of the original, we recorded that in a bibliographic history note (500) as a “Appears in” note. In cases of a map torn out from a magazine, journal etc., LC record the information of the parent in field 773 (Host Item Entry).

- Harmonization of DCRM(C) with RDA, and how to resolve them.
- LC demographic group terms - LC is planning for the incorporation of demographic group terms in its bibliographic records and discussed the applicability of the terms to cartographic materials. Pilot III will run until the end of 2017. There are LCGFT that has the audience component such as Children's maps, Children's atlases, Cartographic materials for people with visual disabilities that might be affected.
- Update from Marc McGee on Linked Data for Libraries Cartographic Materials.

## 5. CC:DA report (Min Zhang)

The agenda includes reports from the Chair, Representative of the Library of Congress, ALA Representative to the RDA Steering Committee, PCC Liaison, and MAC Liaison.

CC:DA agenda:

<http://alcts.ala.org/ccdablog/?p=3065>

Minutes of the 2016 Annual Conference in Orlando, Florida

<http://alcts.ala.org/ccdablog/wp-content/uploads/2017/01/MIN1357-1374.pdf>

Chair's report on CC:DA motions and other actions

<http://alcts.ala.org/ccdablog/wp-content/uploads/2017/01/Chair15-16-2.pdf>

Report on RSC Activities, July-December 2016

RSC Governance Developments

- The RSC membership for the Europe region has transitioned to a single representative, currently Renate Behrens (DNB). This is an interim arrangement while the European region continues to develop their governance structure.
- ACOC has started work with colleagues in New Zealand to form ORDAC (Oceania RDA Community).
- Efforts to create NARDAC (North American RDA Committee) will resume in 2017.
- In addition, the RDA Board Governance changes are starting to take place. For details about their plans, visit <http://www.rda-rsc.org/node/437>.

RDA Steering Committee Meeting

Major topics

The RSC meeting focused on the following:

- Adopting the IFLA Library Reference Model (formerly known as the FRBR Library Reference Model).
- Implications of and continuing work on the RDA Toolkit Restructure and Redesign (3R) Project
- Community and Working Group proposals and discussion papers

IFLA Library Reference Model

The RSC agreed to implement the IFLA Library Reference Model (LRM) by April 2018; RDA will be one of the primary instantiations of this model. The final draft, which is awaiting approval by IFLA's Committee on Standards, is considered stable enough for work to proceed. RDA will add five new entities from the LRM: Agent, Collective

Agent, Nomen, Place, and Time-span. RDA will retain its current entities, elements, and relationship designators as refinements of the high-level LRM entities and relationships. For example, “family” and “corporate body” will be sub-classes of “collective agent”.

#### RDA Toolkit Restructure and Redesign (3R) Project

This significant, multi-faceted project will require “freezing” the RDA Toolkit content between April 2017 and April 2018. This means that no proposals, discussion papers, fast track changes, etc. will be considered by the RSC in 2017. For details about the 3R Project, see the following announcements: <http://www.rdatoolkit.org/blog/3RProject> and <http://rdarsc.org/3Rprojectupdate>. Anticipated changes include:

- Conversion of the underlying data to the DITA standard, an XML data model for structured authoring and publishing.
- Increased synchronization between RDA Reference and the RDA Toolkit content. In part, this will help keep the various translations of RDA current with the English base text.
- Implementing the new LRM entities.
- Generalizing the instructions where possible.
- Introducing the 4-fold path (unstructured description, structured description which includes authorized access points, identifiers, and URIs) throughout RDA. This effort will also address the ongoing challenges associated with transcribing vs. recording data.
- Changes to Extent (taking 6JSC/ALA/Discussion/5 into account).
- Creating instructions, etc. for aggregates.
- Developing a new approach to relationship designators and possibly incorporating new terms.
- Restructuring the layout of the instructions, by creating general guidance chapters followed by entity-based chapters.
- Completely removing the instructions currently including the sentence: “This instruction has been deleted as a revision to RDA.”
- Building a concordance of current instruction numbers which will map to their new locations, something like the AACR2 to RDA mapping now.
- Better tracking of revision history.
- Allowing for end-user customization of the display of the RDA text and associated policy statements, etc. The needs and desirable enhancements are being drawn from submitted user stories.

The RSC’s intention is that the changes associated with relocating current instructions will have a minimal impact on the application of the guidelines. Therefore, the April 2018 RDA Toolkit Update will not be branded as RDA 2.0. However, the scope of the 3R Project will also introduce changes (new data elements, practices, etc.), as is obvious from the list above.

Although the RSC will not consider change proposals in 2017, CC:DA may continue to identify gaps in RDA, problems that need to be fixed, etc. When issues arise, they need to be documented with a brief statement about the problem and an outline of the proposed solution. As the ALA Representative, I will collect these summaries, which will be used by the RSC when planning for revisions in 2018.

Report of the LC representative, January 2017

#### Significant Library-wide Personnel Changes

Dr. Carla D. Hayden took the oath of office as the 14th Librarian of Congress on Sept. 14, 2016, in the Great Hall of the Thomas Jefferson Building. Chief Justice John J. Roberts administered the oath of office. Speaker of the House Paul Ryan (R-WI), Senators Roy Blunt (R-MO), and Barbara Mikulski (D-MD) participated in the event, attended by 24 Members of Congress.

#### New Chief, Geography and Map Division

Paulette Marie Hasier has been appointed chief of the Geography and Map Division at the Library of Congress. Dr. Hasier has nearly 20 years of library and geospatial information program management experience, most recently as branch chief of the U. S. National Geospatial Intelligence Agency's GEOINT Research Center and Pentagon Map Library. She will begin her duties on January 23.

#### Other Staffing and Personnel Changes

Paul Frank was promoted to the position of PCC Program Coordinator in the Cooperative and Instructional Programs Division, effective Sept. 12, 2016.

David Williamson, ABA cataloging automation specialist, retired from the Library on Dec. 31, 2016. He was active in the Program for Cooperative Cataloging Standing Committee on Automation and was known for his work in developing software that streamlined intake of new materials, promoted quality control, and reduced the costs of bibliographic control.

Mary Kay Pietris, Senior Cataloging Policy Specialist, retired on Sept. 30, 2016 after 44 years at LC.

Kate James and Melanie Polutta were appointed to Cataloging Policy Specialist positions effective Oct. 17, 2016.

DPLA collaboration. On Nov. 29, 2016, the Library announced a memorandum of understanding with the Digital Public Library of America. The Library will become a content hub partner and ultimately will share a significant portion of its digital resources with DPLA's searchable database of records for digital content. The first items to be shared via DPLA are 5,000 digitized items from the Library's Revolutionary War, Civil War, and panoramic map collections. More than 100,000 of the Library's digitized book files are also accessible via DPLA by virtue of the Library's membership in the HathiTrust.

#### BIBFRAME (Bibliographic Framework Initiative)

This initiative is an investigation of the emerging Linked Open Data environment for sharing of bibliographic descriptions that currently use the MARC Format. Documentation of the project is available from the BIBFRAME web site, URL <http://www.loc.gov/bibframe>.



In fiscal 2016, the Library of Congress continued development of the Bibliographic Framework model and vocabulary to replace MARC 21 as a cataloging metadata standard in order to reap the benefits of newer technology, particularly data linking.

The ABA Cooperative and Instructional Programs Division and NDMSO continue to work together on BIBFRAME development and testing. A report was issued June 2016 on BIBFRAME Pilot Phase One, the test of BIBFRAME vocabulary 1.0 conducted September 2015-March 2016: <https://www.loc.gov/bibframe/docs/pdf/bibframe-pilot-phase1-analysis.pdf>. A webinar on “Library of Congress BIBFRAME Developments” was held October 2016 as an introduction to the “From MARC to BIBFRAME” series sponsored by the ALA division ALCTS (Association for Library Collections and Technical Services), and the recording was made freely available at URL <http://www.ala.org/alcts/confevents/upcoming/webinar/101216>.

Participants in the BIBFRAME Pilot continue to keep their BIBFRAME skills current by working one day a week with the BIBFRAME Editor and by attending monthly open sessions where findings can be shared. BIBFRAME Pilot Phase Two is scheduled to begin in early 2017. Testing BIBFRAME vocabulary 2.0 will be the primary focus of this next pilot.

#### Network Development and MARC Standards Office (NDMSO)

LC Linked Data Service (ID) <*id.loc.gov*>. Library of Congress Linked Data Service (LDS/ID) provides a Web service interface for developers, whether local or external to LC, to programmatically interact with data values commonly found in standards promulgated by LC. The service’s initial launch, in fiscal 2009, provided access to the *Library of Congress Subject Headings*. In fiscal 2010 several additional lists were made available: *Thesaurus for Graphic Materials*; *MARC Relator* codes; and several preservation vocabularies. In fiscal 2011, NDMSO added the LC Name Authority File (8 million records), and in fiscal 2012-2015 several classification schedules and a variety of services were added to ID in order to use the data in support of MARC and PREMIS metadata standards and the BIBFRAME Pilot. NDMSO will continue to publish data value lists at ID, which has become a model for Linked Data not only within the library community but also the broader semantic Web community.

Several changes were made to a number of datasets to enhance accuracy and access. The most significant change was the improvement of *Library of Congress Demographic Group Terms (LCDGT)* to allow terms to be collocated at a broad level. Other changes included enhancing definitions and adding versioning. To keep up to date with a major new revision of *PREMIS* (version 3), five new *PREMIS* datasets were added to ID.

Cataloger’s Desktop. Over the past six months, the focus on *Cataloger’s Desktop* development has been on enhancing search and retrieval through two major projects. The first project, “Query suggestions,” enables *Desktop* to anticipate what the searcher wants by typing ahead as searches are entered into the searchbox. For example, if “ser” is typed into the searchbox, a dropdown box appears just below the searchbox with up to 8 suggested queries and 5 suggested *Cataloger’s Desktop* resource titles. Each suggested query or title highlights matches to what you’ve typed in the searchbox and can be

selected by either left mouse-clicking or using the down arrow key and then clicking “enter.” This feature also takes advantage of *Desktop*’s fuzzy matching capabilities (e.g. “serr” will retrieve “serials”).

The second project, “Metadata enhancement,” makes *Cataloger’s Desktop* searches narrower, better focused, and more precise by programmatically enhancing metadata attached to *Desktop* resources. The change involved generating a terminology dictionary created from glossaries, dictionaries, and term lists recommended by roughly two dozen subject matter experts from inside and outside LC. These terms were deduped, and generic or ambiguous terms were removed from the resulting vocabulary. Once the vocabulary was complete, it was indexed against the 330+ *Cataloger’s Desktop* resources, and metadata were added at the paragraph level. The resulting metadata support dramatically improved access without requiring the searcher to use the “right” terminology. This vocabulary has also been added to *Desktop*’s suggested search feature, which enables *Desktop* to anticipate what the searcher is looking for.

Suggestions for improving *Cataloger’s Desktop* should be sent to Bruce Johnson at the Library of Congress at [bjoh@loc.gov](mailto:bjoh@loc.gov). Subscribe to the free *Cataloger’s Desktop* discussion list at URL [www.loc.gov/cds/desktop/ugroup.html](http://www.loc.gov/cds/desktop/ugroup.html).

#### National Enterprises Directorate

##### Business Enterprises

Users of *Classification Web* and *Cataloger’s Desktop* should anticipate improved integration between the two services this year. We are developing a new design that will harmonize the “search” experience between the two services. The harmonized design will allow those who subscribe to both services “one-stop searching,” which should save significant time.

#### National Book Festival

The 2016 National Book Festival was a great success, with record crowds. Plans are well underway for the 2017 National Book Festival, to be held Saturday, Sept. 2, 2017, at the Walter Washington Convention Center in downtown Washington, D.C. This is the Library’s largest event, and is always free and open to the public.

## **6. LC Geography and Map Division report (Min Zhang)**

### **Geography and Map Division (G&M)**

ANNUAL REPORT for Fiscal Year 2016

Ralph E. Ehrenberg

#### A. Building the National Collection

The Geography and Map (G&M) continued to build the national cartographic collection through a five-prong approach: transfers from government agencies and libraries, deposits by mapping agencies, copyright deposits, donations, and purchases. Additionally, current cartographic materials are obtained through the Department of State’s Federal Map Procurement Program (FMPP) and Library of Congress Field Offices.

A total of 45,854 cartographic items were acquired by the Geography and Map Division (G&M) during FY16, including 22,351 maps, 3,645 atlases, 3,705 computer data files containing over 16,000 maps, and 144 publications. This represents a six percent increase over last year.

#### Acquire designated materials

Star-Chart of the Southern Hemisphere by Albrecht Dürer, published in 1515 and annotated by the Renaissance scholar Johannes Schöner with his astrological predictions. This acquisition, reunited the final document that had been removed from the Schöner Sammelband as originally collected and bound together with Martin Waldseemüller's two great wall maps of the world by Schöner sometime after 1516. With the addition of this chart, the Library of Congress has completed one of the most ambitious collection programs in the history of cartography, reassembling in one place, after more than 350 years, one of the great collections of Renaissance maps and charts.

Global Marine/Geocables database. Dept. of State/ Foreign Map Procurement program purchase for G&M.

Geospatial digital data file of topographic map of the United Arab Emirates at 1:50,000 scale, Georgia at 1:50,000 scale, and the Republic of South Africa (various formats) were purchased.

Dr. Jonathan Levin donated a personal collection of some 1,500 twentieth century atlases and monographs. G&M retained 270 atlases, including 67 in Hebrew, 12 in Chinese, and five in Persian, while the remainder were packed and shipped to the Osher Map Library in the University of Southern Maine.

#### B. Stewardship of the National Collection

##### Collection storage

By the end of FY16, CMT managed 5.9 million cartographic items housed in 53,670 map drawers (10,734 five-drawer map cases); 80,000 atlases (9.12 miles of shelving); 62,270 CDs; 500 globes; and approximately 300 three-dimensional models.

##### Collection security

Four digital conversion programs contributed to collections security and preservation by indexing and scanning rare maps, producing 301,383 digital images in the process.

- 1) G&M Dynamic Indexing Project: the project involves scanning large scale set maps for crisis regions around the world. By the end of the fiscal year 62,513 maps were scanned and indexed and we are working through ArcGIS to put them online.
- 2) G&M Third Party Digitization Projects: A total of 233,954 historic maps were scanned this year by two third-parties working the Geography and Map Division. 2.1) The National Geospatial-Intelligence Agency (NGA) scanning project produced digital images of the Republic of Cameroon, Democratic Republic of the Congo, Cotê d'Ivoire, Eastern Africa, Egypt, Mali, Rwanda, Sudan, and Togo (140,039 sheets). 2.2) The Minneapolis environmental data research firm, Historical Information Gathers (HIG) completed the scanning of out-of-copyright fire insurance maps for 15 states and the District of Columbia. HIG is delivering the processing images and 34 states have been

ingested. We plan to have the 17 remaining states ingested before the end of the calendar year. Of these, 12 states have been processed and 10,211 sheets published before 1900 are now available online through the Sanborn Maps Online.

- 3) G&M Scan Lab Digital Conversion Program: The rare vault map scanning project of U.S. regions, states, counties, and cities prior to 1923 continued. 3,636 maps scanned during the year for a total of 57,674 maps online.
- 4) A number of atlases were also scanned as part of a preservation project conducted by the Preservation Division, which produced digital images of 1,280 maps.

### C. Sharing the National Collection

Provide access to the collection

The Library's National Cartographic Collection is accessed through its Research and Reference Center (opened M-F, 8:30 a.m. to 5:00 p.m.) and the Library's online website.

1. Research and Reference Center: provided 2,800 walk-in researchers with 76,280 cartographic materials, answered more than 16,675 queries, responded to 1,570 electronic reference requests, and provided 135 interlibrary loans and 509 exhibit loans.
  - \* The Division once again held an open house for participants and families competing in the National Geographic Society's GeoBee. Over 50 participants attended the session.
2. Map Collections Online Website: The Division's Map Collections Online Website was visited 1,983,190 times by 1,567,009 unique visitors who viewed 7,544,924 map images.
  - \* A 500-plus page guide provides carto-bibliographic information on the Division's more than 2000 single maps, set maps and atlases that concern Ireland was completed: Irish Maps: a catalog of the maps, atlases, and nautical charts of Ireland in the Geography and Map Division of the Library of Congress with a select map gallery, compiled by Patrick Dempsey, Eileen M. McConnell, Kenneth B. McConnell, and Barbara S. O'Brien, with introduction and map gallery by Ryan J. Moore.
3. Congressional Cartography Program: Jacqueline Nolan and Tim St. Onge responded to 25 requests for cartographic products and services, including data analysis, geospatial data sets, maps, and web-enabled templates, from Congress, the Congressional Research Service, the Law Library, and the Library. They also briefed 20 members from the Clerk of the House and Senate offices, and 40 members from the National Geospatial-Intelligence Agency.

Electronic Media:

- \* "Places in the News" Online Website: 33 new maps were mounted on the Division's online website that targets K-12 school teachers and their students, which ranged from earthquakes (Amatrice, Italy) to hurricanes and cyclones (Typhoon Malakas) to terrorist actions (EgyptAir Flight 804). More than 566,000 hits were recorded. FY16 marked the final year for Places in the News, as maps are now ubiquitous in all media and are readily available. G&M will archive the site for historical purposes since it continues to receive hits from students and researchers. Places in the News created a new outlet for G&M's collections and provided a much-needed boost to the use of maps around the world, when it started in the late 1990s.
-

\* “Places in History” Online Website: over fifty captions describing Civil War era maps in the collections of the Geography and Map Division were added monthly by Webmaster Diane Schug-O’Neill to the Library’s Places in History website which currently has over 19,000 subscribers. Places in History will be moved to G&M’s “Worlds Revealed” blog shortly.

\* Social Media: the social media accounts of the Geography and Map Division include a Division Twitter account and a Division blog. These are used to share information about the Division’s map collections and insights into topics within geography to a wide online audience. G&M’s Twitter account is one of the most popular Library of Congress accounts, with 530 tweets during the past fiscal year. G&M’s blog, “Worlds Revealed: Geography and Maps at the Library of Congress,” published 63 blogs in 2016.

#### Exhibitions:

\* Abel Buell map exhibit in the Jefferson Building, with a rotation of eight new maps that focuses on Mapping A Growing Nation: From Independence to Statehood (opened September, 2016). He prepared new captions, exhibit text, and brochure text.

\* Drawing Boundaries: The Centennial of the National Park Service and the Organic Act (1916 – 2016). The exhibit commemorates the 100th anniversary Junior Fellow Katji Lattik, of the Organic Act that established the National Park Service. The exhibit details the history and events leading to the passage of this Act, by Congress, illustrated through selected maps marking historic milestones.

#### Publications: Books

\* \* Making the Modern Map/Library of Congress Magazine (September/October, 2016). G&M staff authored eight of the 11 articles.

\* Map: exploring the world (Phaidon Editor Limited, 2015, 352 pp.), edited and introduction by John Hessler on NY Times non-fiction best seller list for two weeks.

## 7. OCLC report (Jay Weitz)

Jay Weitz distributed the full OCLC report to the committee members and guests. Excerpts from the report of OCLC of interests to map catalogers appear below.

**News From OCLC**  
Compiled by Jay Weitz  
For the American Library Association  
Midwinter Meeting  
Atlanta, Georgia  
2017 January 20-23

### **Cataloging and Metadata**

#### **National Central Library of Rome Adds Catalog Collections to WorldCat**

The National Central Library of Rome (Biblioteca Nazionale Centrale di Roma) <http://www.bncrm.librari.beniculturali.it/index.php?en/1/home> has loaded nearly 2 million records into



WorldCat, the world's most comprehensive database of information about library collections, to increase visibility of these Italian collections around the world. The National Central Library of Rome holds a large number of special collections and print materials dating back to the 15th century with more than 7,000,000 printed volumes, 1,342,154 brochures, 25,000 cinquecentine (16th century books), 20,000 maps, 10,000 drawings, 8,000 manuscripts, and 2,000 incunabula. Following the initial load of 2 million records, the National Central Library of Rome will continue to add records to WorldCat. The mission of the National Central Library of Rome is to capture, collect, and describe the national published record of Italy and the most important foreign publications, particularly those that relate to Italy. This work is vital in making the Italian published record visible to its citizens and around the world. By uploading the records to WorldCat, the National Central Library of Rome will make them discoverable to international users through the Web.

## **Resource Sharing**

### **OCLC Acquires Relais International to Provide Resource Sharing to Consortia**

OCLC has agreed to acquire Relais International, a leading interlibrary loan solution provider based in Ottawa, Canada, to significantly increase resource sharing options and capabilities for both Relais customers and OCLC member libraries and groups worldwide. Relais has been working with libraries for more than 20 years to provide solutions for the full range of interlibrary loan and consortial resource sharing services. All Relais staff members will join the OCLC staff. Relais D2D (Discovery to Delivery) solution is the market leader in consortial borrowing, and continues to grow. It is a state-of-the-art solution consistent with OCLC's vision for a new service to address the needs of consortial borrowing users. OCLC currently offers resource sharing solutions on the WorldShare technology platform. The WorldShare Interlibrary Loan service provides core ILL capabilities to thousands of libraries.

### **OCLC Introduces “Tipasa” Interlibrary Loan Management System**

OCLC introduces Tipasa™, the first cloud-based interlibrary loan management system that automates routine borrowing and lending functions for individual libraries. The new Tipasa system is built on the OCLC WorldShare technology platform and takes advantage of the world's largest resource sharing network. Tipasa reimagines features and functionality of the Windows-based ILLiad service, and moves them to the cloud. Because updates and enhancements happen automatically in a cloud-based system, Tipasa requires only limited IT resources. The simple interface is easy to use, making it easy to train staff, volunteers and student assistants. Libraries have the option to create unmediated processes to move requests to lending libraries and then to the user—anywhere, anytime, on any device—without requiring manual approval. Library users can receive customized email and text notifications, and they can access content as soon as it becomes available. Tipasa complements a growing list of OCLC resource sharing solutions. OCLC's WorldShare Interlibrary Loan (ILL) provides core interlibrary loan services to thousands of libraries around the world. WorldShare ILL and Tipasa are built on the WorldShare technology platform. OCLC also announced an agreement to acquire Relais International, the leader in consortial borrowing. Together, these systems and services deliver a comprehensive set of resource sharing solutions for libraries around the world. OCLC shared its plans to begin the Tipasa project in March 2016. Current ILLiad users will be able to move to Tipasa over

---

time. To date, more than 50 libraries have committed to the first phase of the early-adopter program to implement Tipasa, and eight libraries are currently using the system.

## **8. MARC Advisory Committee report (Susan Moore)**

The MARC Advisory Committee met twice at the conference. While there was a full slate of proposals and discussion papers for the meetings, there were few that related specifically to cartographic resources. Proposal 2017-05 adds a subfield for color to Field 340, which is used for physical description information for an item that requires technical equipment for its use or an item that has special conservation or storage needs. This proposal passed and could impact rare map cataloging.

Discussion paper 2017-DP03 explores the potential ways to add accessibility information to the bibliographic format to indicate content that provides alternative sensory modes to perceive the primary content of a resource. This could apply to tactile maps if a proposal comes back. The discussion at the table was generally favorable in adding this information to the bibliographic record. One of the suggestions was to redefine field 007/2 which didn't receive support. We will likely see a proposal at Annual for the addition of field 341 - Accessibility Content, with a human-readable note in field 532.

Discussion paper 2017-DP04 posits adding subfields to Field 777 (Issued With Entry) that would allow the use of the field for monographs as well as serials. The subfields suggested are \$r for report number, \$u for standard technical report number, and \$z International Standard Book Number. This received general support.

A discussion paper that generated a great deal of discussion was 2015-DP05 which would like the use of the \$5 in the 6XX fields to be broadened to allow the use of \$5 to show what library's rules and regulations were used to create the 6XX field. Reaction to this paper was mixed.

Discussion paper 2017-DP02 suggests adding field 758 which would be defined as a related work identifier for those cases where a work identifier or URI is available but is not explicitly associated with an authorized access point or other title construction. This would allow the inclusion of a URI pointing to a non-library source such as a Wikidata entry. There was general support for this idea as well.

The Library of Congress reported that there have been three items that went through the fast track process. After a change to the MARC formats has been approved through the fast track process, an announcement is put on the MARC discussion list, the change is added to the documentation in red, the date of the revision of the field isn't changed, and there is a 60-day embargo from implementing the change once published.

## **9. RBMS/DCRMC report (Nancy Kandoian)**

The ACRL/RBMS Descriptive Cataloging for Rare Materials Task Force is working on creating an initial version of a consolidated Descriptive Cataloging for Rare Materials (DCRM) standard based on RDA. This will probably take the form of policy statements for

treatment of various kinds of rare materials, linked to relevant parts of RDA. The task force will be submitting their report, in effect, Version 1.0 of this effort to harmonize all DCRMs with RDA, by July 1, 2017. Part of this harmonization effort that stems from the publication of DCRM for Cartographic Materials is the introduction of the phrase “Scale not determined” for maps where scale is given in some way on the material, but for whatever reason, is not approximated as a representative fraction to be given in the catalog record. Since this phrase is not now a part of RDA, there is an interest on the task force in introducing it to RDA. While there is a moratorium between April 2017 and April 2018 on changes to content of RDA while the [3R Project](#) (RDA Restructure and Redesign) is going on, it would be good to get feedback from the map library community on the desirability of introducing this phrase to RDA. Comments on this are welcome, and can be passed along to me ([nancykandoian@nypl.org](mailto:nancykandoian@nypl.org)), or directly to task force chair Francis Lapka [francis.lapka@yale.edu](mailto:francis.lapka@yale.edu).

As you all probably have heard, at ALA Annual in Chicago this year, MAGIRT will be sponsoring, with the co-sponsorship of RBMS, a half-day preconference for map catalogers on using DCRM(C) for cataloging rare cartographic materials. [Registration is open as of February 2 for the June 23 preconference. See <http://2017.alaannual.org/ticketed-events#MAGIRT> ] Preconference attendees will get a copy of the DCRM(C) manual, which has only been published online. As a side note, the [online manual](#) is a searchable pdf, but as yet does not have an index; it is to be indexed at some future time.

## 10. Old business

Demographic Group Terms. *Library of Congress Demographic Group Terms* (LCDGT) is intended to describe the creators of, and contributors to, resources, and also the intended audience of resources. Terms may be assigned in bibliographic records and in authority records for works. Phase 3 of the LCDGT pilot has been extended through the end of 2017. Proposals for terms that are needed *in new cataloging only* are being accepted. Because of PSD staffing and workload considerations, proposals that appear to be made as part of retrospective projects, or projects to establish terms that are not needed for current cataloging, will not be considered. All proposals should follow the guidelines on form of authorized term, references, scope notes, research, etc., presented in the draft *Demographic Group Terms Manual*, which is available at URL <http://www.loc.gov/aba/publications/FreeLCDGT/freelcdgt.html>.

SACO members should use the Proposal System when making proposals and send an email to [saco@loc.gov](mailto:saco@loc.gov) to inform Coop staff that the proposals are ready, according to the normal procedure. Questions or comments about the pilot may be directed to Janis L. Young at [jayo@loc.gov](mailto:jayo@loc.gov).

Susan Moore gave an update on the status of the document “Best Practices for Cataloging Cartographic Resources using RDA.” After revising it based on the suggestions received during the Cartographic Materials Cataloging Interest Group, she will post it online.

## 11. New business

At the ALA Annual Conference in June, there will be a Preconference on cataloging maps with DCRM(C), and a 2-part program on using maps with family history, entitled “Mapping the Generations: Visualizing Family History with Maps.”

The Committee expressed appreciation for Iris Taylor for stepping in as the Committee Chair at short notice.

## 12. Adjournment

The meeting was adjourned at 11:28 am.

Respectfully submitted,

Tammy Wong



RECOMMENDED BY  
**Library Journal** and **Choice Magazine**

**POLICYMAP.COM**

### THE LATEST DATA + EASY-TO-USE MAPPING all in one place, all online.

A growing number of universities subscribe to PolicyMap, the web's largest and most affordable one-stop shop for community data and mapping.

MULTI-DISCIPLINARY RESEARCH	UNIVERSITY ADMINISTRATION
Social sciences	Strategic planning
Urban planning	Government relations
Political science	Community outreach and engagement
Public policy	Economic development
Business	Competitive grant applications
Public health	
Education	

**ACADEMIC DISCOUNTS!**

**TRF policymap**

**Over 37,000 indicators**  
DEMOGRAPHICS - INCOMES & SPENDING - HOUSING - LENDING  
QUALITY OF LIFE - ECONOMY - EDUCATION - HEALTH

**For a free trial or demo:**  
[SALES@POLICYMAP.COM](mailto:SALES@POLICYMAP.COM)  
1-866-923-MAPS

# **Register NOW for MAGIRT's Preconference Workshop on DCRM(C)!**

## **Space is limited!**

With the co-sponsorship of the ACRL Rare Books and Manuscripts Section, the publisher of DCRM(C), we are pleased to present at the ALA Annual Meeting in Chicago:

Applying 'Descriptive Cataloging of Rare Materials (Cartographic)  
Friday, June 23, 2017, 9:00AM - 1:00PM

Through lectures, visual aids, and in-class exercises, workshop participants will be introduced to and gain some practical experience in using "Descriptive Cataloging of Rare Materials (Cartographic)," or DCRM(C). The workshop will focus on the descriptive portions of the bibliographic record, following the scope of DCRM(C), with special emphasis on the differences between "Cartographic Materials: A Manual of Interpretation for AACR2" and DCRM(C). The workshop is suitable for those with working map cataloging experience who wish to be introduced to rare cartographic materials cataloging according to DCRM(C).

### **Instructors:**

- Todd Fell, Yale University
- Nancy Kandoian, New York Public Library
- Manon Thérout, Library of Congress

Cost: \$150.00

(This will include a printed copy of DCRM(C))

***Remember, space is limited!***

Register at this link:

<http://2017.alaannual.org/ticketed-events#MAGIRT>

For more information, contact either:

Nancy Kandoian [nancykandoian@nypl.org](mailto:nancykandoian@nypl.org)

Louise Ratliff [lratliff@library.ucla.edu](mailto:lratliff@library.ucla.edu)





## MAGIRT Core Competencies Task Force

The MAGIRT Core Competencies Task Force (MAGIRT CCTF) is well underway and is progressing nicely with their work on the updating of the [“Map, GIS and Cataloging/Metadata Librarian Core Competencies”](#) document published in 2008.

The group last met via ZOOM video conferencing on Tuesday, January 10, 2017.

TEAMS	Cataloging / Metadata
	GIS Librarianship /GIS Technologies
	Map Collection / Management
	Education / Job Description

At this time no final decisions have been made on structure or layout of document. The individual teams will concentrate first on what content will be included in their section of the document. The next step will be to decide the format of the document and then begin to build the document including cross-references from one section to another wherever appropriate. A chief editor will be assigned toward the end of this process.

When a rough draft has been completed by the MAGIRT CCTF team and is ready for viewing, a notice will be sent out to MAGIRT membership at large to provide an opportunity for comment and suggestions on the draft prior to the ALA Annual meeting in June. We highly encourage this participation. In the meantime please do contact if there are any suggestions/ideas to submit for this project.

Thank you  
Maggie Long  
Project Coordinator, MAGIRT CCTF  
[magirtcctf@gmail.com](mailto:magirtcctf@gmail.com)



---

## Big Ten Academic Alliance Geoportal

The University of Iowa Libraries' publication *Bindings* published an article on the Big Ten Academic Alliance Geoportal titled “Goportal: Opening the World to Geospatial Data” that I and some other MAGIRT members are involved in and would like to share it with everyone.

<http://www.pageturnpro.com/Libraries-at-the-University-of-Iowa/77012-University-of-Iowa-Libraries-Bindings-Magazine-Winter-2017/index.html#10>

The link goes directly to the BTAA Geoportal article on page 10-11, but feel free to browse the rest of the magazine.

Catherine Hodge  
[catherine-hodge@uiowa.edu](mailto:catherine-hodge@uiowa.edu)





TO READ MORE ABOUT THE MAGIRT  
MEMBER TOUR AND DUTCH-TREAT DINNER IN ATLANTA AT  
MIDWINTER – AND SEE SOME PHOTOS – GO TO OUR  
FACEBOOK PAGE!

[https://www.facebook.com/MAGIRT-Map-and-Geospatial-  
Information-Roundtable-ALA-137740652921351/](https://www.facebook.com/MAGIRT-Map-and-Geospatial-Information-Roundtable-ALA-137740652921351/)

## **NGAC releases transition documents**

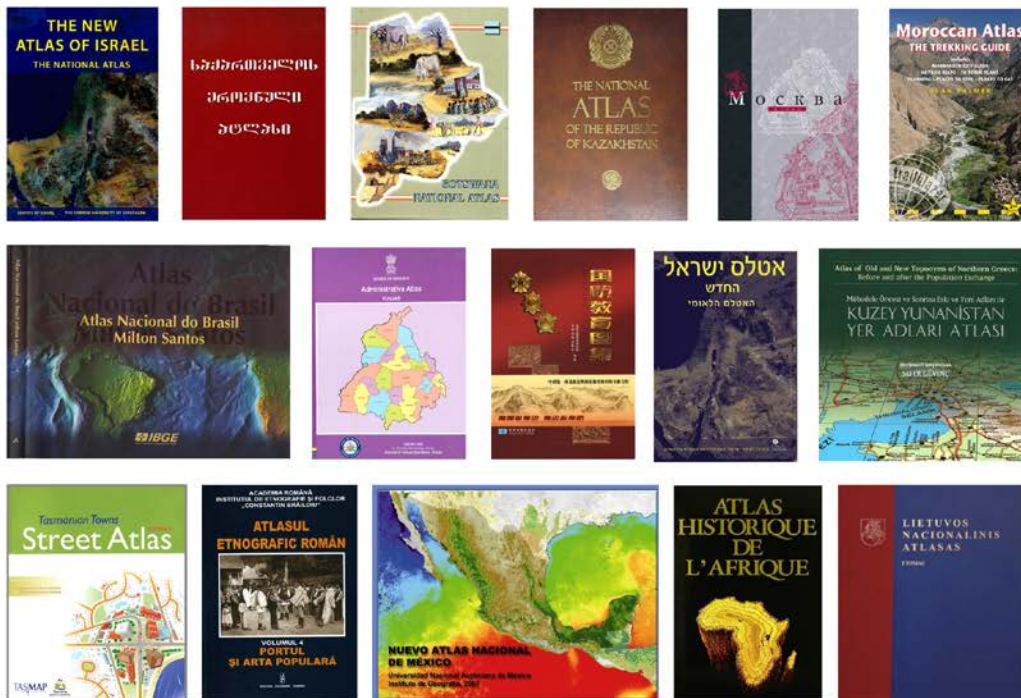
The National Geospatial Advisory Committee (NGAC) has released three documents of interest to the geospatial community. Two of the documents were written to aid in the transition to a new administration in Washington, DC. The third document is an overview of emerging technologies that will impact the geospatial landscape in the near- and mid-term future. Taken together, these works provide a broad overview of the thinking of the NGAC members as they look forward to the next few years in the geospatial sector.

[http://library.stanford.edu/blogs/stanford-libraries-blog/2017/01/  
ngac-releases-transition-documents](http://library.stanford.edu/blogs/stanford-libraries-blog/2017/01/ngac-releases-transition-documents)

Julie Sweetkind-Singer  
Assistant Director of Geospatial and Cartographic Services, Head of the  
Branner Earth Sciences Library & Map Collections

[sweetkind@stanford.edu](mailto:sweetkind@stanford.edu)

## BUILD YOUR ATLAS COLLECTION WITH AN APPROVAL PLAN



Want to increase your atlas holdings but don't have the time to select through thousands of titles in dozens of languages? East View offers atlas approval plans tailored to your collection's needs. Free brief MARC records come with any size approval plan.

Or ask us about our customized suggestion lists. Whether you know the exact title required or you need coverage for a specific area and need suggestions, we can help.

To find out more about East View Atlas approval plans or suggestion lists, contact [books@eastview.com](mailto:books@eastview.com).

East View Information Services | [books@eastview.com](mailto:books@eastview.com) | [www.eastview.com](http://www.eastview.com)

# **MAGIRT Executive Board Meeting Minutes**

## **October 11, 2016**

### **Approved Minutes**

Present: Louise Ratliff, Beth Cox, Susan Moore, Andrew Battista, Iris Taylor, Colleen Conner, Mike Smith, Leslie Wagner, Carol McAuliffe

Absent: Joy Suh, Carolyn Kadri, Katherine, Katherine Strickland, Nicole Kong, Anne Zald

#### **Call to order, and call for Changes to Agenda** (Louise)

Called to order 1:08 p.m. (EST)

In order to record a meeting, one must be logged into Zoom as MAGIRT

#### **Approval of minutes from August 23, 2016 meeting:**

Tabled until next Executive Board meeting.

#### **Officer Reports**

##### **Chair** (Louise)

Committee, IG, DG and Task Force work: Met with some Committee, Taskforce and Discussion Group (CCM, OPOC, Education, Membership & Marketing) Heads to discuss what we should be working on this year.

Program planning: Contacted all people interested in volunteering. Copied Andrew and Colleen so they can help market the programs.

Pre-Conference: *How to Catalog Cartographic Materials using Descriptive Cataloging of Rare Materials—Cartographic) DCRMC*, to be presented by Nancy Kandoian and a colleague. Workshop will be four hours, since most attendees will be experienced map catalogers, and will cover the differences between the old edition and the new one.

Program for ALA Annual: Maps and genealogy theme. Ryan Mattke (U-MN) volunteered to help. He will do 1 hour novice-level tutorial on how to obtain a digital map, georeference it and put it in an interface, then put location information on it. People who attend the tutorial will be able to take something home with them at the end of the workshop. First part of the program 90 minutes of introductory discussion on how people use maps in family history exploration. Louise hopes to get a genealogist for that part of the program. MAGIRT is sponsoring this program in name-only with RUSA, and also co-sponsoring RUSA's program in name-only.

##### **Vice Chair** (Leslie)

Midwinter Atlanta 2016 plans:

Field trip/tour: Georgia State University—Atlanta Map Library. Brian Sinclair, Associate Dean of the Library at GSU will show us their digital CURVE screen for map visualization, as well as some Special Collection maps. The GSU Map Library website has images of the screen.

Evening dinner: southern style BBQ? Still gathering recommendations. Beth has friends in Atlanta she could ask. Perhaps ask Hallie Pritchett from U of GA if she has any ideas about dining in Atlanta.

#### Secretary (Cathy)

Minutes for 2/3/16, 4/7/16 and 6/5/16 submitted to *base line*

MAGIRT website (Louise Ratliff & Beth Cox): The boxes that describe what the committees do needs to be updated. Ask committee chairs, task force and discussion group leaders to submit a 2-3 sentence blurb to Mike Smith and Catherine Hodge, describing the current activities of each group.

LibGuide: We don't know where information describing committee activities is pulled from in the LibGuide, since there is no box. Carol said she knows where that information comes from and will contact Mike about it. Colleen Conner is our webmaster. Once we figure out how to add another text box to the LibGuide, Mike will add the committee activities. Beth will also look into the website-LibGuide issue.

#### Treasurer (Susan):

The report Susan sent was based on the July report, since that was the last once she had when compiling it. She received the August report today (10/11).

As of August, our income is \$15,650 and expenses are \$6,968. We spent less on ALA Annual than we budgeted for. Bank fees will be more than double what we budgeted for, something to keep in mind when drafting the next budget.

FY 2019 budget: Danielle needs the proposed budget in October-November. The final version is due in February 2017 after Midwinter. Susan will begin drafting the FY 2019 budget. The Executive Board will review the budget at the December meeting, and the final budget will be submitted for approval at Midwinter.

#### Past Chair (Beth):

MAGIRT/GODORT ALA preconference: Total revenue was \$6420, expenses were \$2698. Net revenue \$3730.22. Net revenue will be split between MAGIRT and GODORT. Our revenue is \$1800.

Since the preconference was not at the conference site, we were able to use non-ALA approved vendors, who were less expensive. Expenses included: travel expenses, transportation, honoraria, lunch and a snack for the presenters. Costs were modest thanks to Rich Gause of GODORT.

The preconference was well received and beneficial for the participants.

#### New Business

Rethinking the ALA Annual Conference (Louise):

ALA is looking for input about making Annual more effective and efficient in content, time and space. Since many meetings are now held virtually throughout the year, this might include cutting down on the number of meetings, meeting rooms and venues for a more compact conference.



Review the document Louise sent board members before the December meeting and be prepared to discuss it. ALA wants the ideas at Annual 2017 and probably Midwinter 2017 as well, with a goal of implementing the new conference model for Annual 2018.

Map scale indicators (Beth):

Map scale indicators are produced at Memorial University of Newfoundland. Mr. Wood, the person we go through to purchase them, is ill. For now, his wife is taking over responsibility for distributing them, but she is uncertain how long she will continue to do so. Should MAGIRT offer to take over distributing map scale indicators? We would purchase them from MU-Newfoundland and sell them for cost. Beth will write to Mrs. Wood to offer to do so. Susan said that at one point in the past, MAGIRT offered to become the U.S. distributor, but at the time, Mr. Wood was not interested in establishing that relationship. Beth will contact with ACMLA and WAML.

Questions: Can we do this outside of ALA? If not, we can partner with WAML and set up a payment system. Follow up on this at Dec. meeting.

### **Discussion Items**

Postcards to publicize survey for Guide to US Map Resources (Carol)

Survey focus is on US Government produced documents

Hallie will be doing a poster session on the survey next week at FDLC (Federal Depository Library Council).

The task force submitted an article about the survey to base line, with a link to the survey in the article.

Postcards for Midwinter: Carol proposed creating postcards with a survey link and QR code for distribution at Midwinter. The cards cost \$22 for 100 postcards. Carol moved that MAGIRT fund the purchase of a total of 300 postcards for not more than \$100, to include the reimbursing Hallie for postcards printed for FDLC at her own expense. Motion passed unopposed. Hallie can submit hard copy receipts to Danielle for reimbursement, copy to Susan Moore, Maggie Long and Louise.

MAGIRT Google account (Carol): Carol requested and permission was granted to link the survey to MAGIRT's google account: [magirtgeospatial@gmail.com](mailto:magirtgeospatial@gmail.com)

Survey to Map Libraries: Executive Board members should review survey to see if there are any suggestions for changes, especially from government documents librarians: [https://docs.google.com/forms/d/e/1FAIpQLScOPize90MJL\\_C6s1Dmpfq8cQNtOp-cHGPvjAKdU2RXB7AxfWA/viewform?c=0&w=1](https://docs.google.com/forms/d/e/1FAIpQLScOPize90MJL_C6s1Dmpfq8cQNtOp-cHGPvjAKdU2RXB7AxfWA/viewform?c=0&w=1)

### **Committee/DG/IG reports**

Bylaws & Governing Documents and Nominations & Awards Committee (Beth):

Beth will update bylaws and org manual to reflect our current organization and practices. Any bylaw changes for the official ALA ballot are due at the

beginning of December since according to our bylaws we have to give members at least 30 days and no more than 90 for discussion. January 26, 2017 is the deadline for submitting bylaw changes for the ALA ballot.

Beth needs to make sure our rules and bylaws align with ALA's rules and bylaws and to Roberts' Rules of Order. ALA adopted Roberts' Rules because Sturgis was out of date. Louise: Take time to do a thorough job so that we don't find ourselves having to update again anytime soon.

Org manual is a procedural manual and doesn't require a membership vote. Only the Executive Board needs to vote on it. Currently, org manual consists of bylaws. We may change the format of the org manual if necessary.

Call for nominations for open officer positions—new Vice Chair and new Assistant Treasurer for next year. In *base line*. If we know of anyone who might be interested, let Beth know.

Beth sent out a call for volunteers to serve on committees and was bombarded with people willing to serve. Beth has three names for Membership & Marketing.

Cataloging & Classification Committee (Carolyn)

Education Committee (Anne)

GeoTech Committee (Nicole)

Membership & Marketing Committee (Colleen/Andrew):

Andrew has a list of tasks from Louise, new members are helpful. Coordinate with Louise and Beth on marketing for ALA Annual. Time has been scheduled for meeting and planning at Midwinter. Beth reminded us that we can use Zoom software for meetings. Instructions on ALA Connect on the Executive Board page.

Louise proposed MMC confer with Louise and program planning people to design and print a marketing postcard to hand around at Midwinter and ALA. Postcard would need to be ready before Christmas break. We have to find someone to design the postcard. It is possible Hallie might be willing. Leslie will help design the postcard. Louise and Beth will also work with MMC on the postcard.

Online Presence & Oversight Committee (Mike):

Contacted past members who are all returning to the Committee. Beth sent the names of two new names.

LibGuide content updates: add text boxes for Committees to describe mission and activities. How is LibGuide connected to the website as far as updating the committee descriptions and activities? It is not clear where the text box is for that in the LibGuide. Louise recommended Mike confer with Colleen Cahill on that.

Louise: In addition to LibGuide content updates, our subscription is up for renewal in March. Our content is archived on their server.

Publications Committee (Katherine)

Program Planning Committee (Louise)

CaMMS/MAGIRT Cataloging Interest Group (Iris)

GIS Discussion Group (Joy)

Map Collection Management Discussion Group (Carol)

Task force on *Online Guide to U.S. Map Resources* (Carol)


Survey feedback <https://goo.gl/forms/hrZJmEO0N9v4UmIS2> (per email sent 10/10)

Task force on Core Competencies (Maggie)

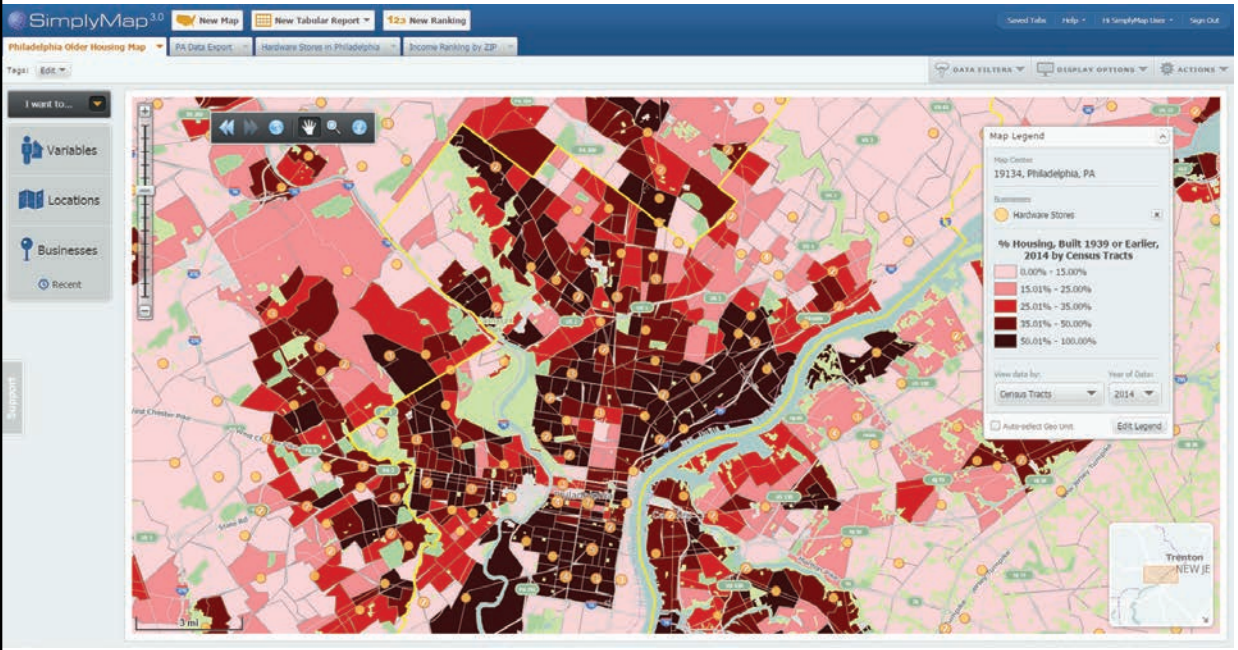
## **Announcements**

Submitted by Catherine Hodge  
MAGIRT Secretary





SimplyMap has all the data you need to answer key research questions, make sound business decisions, and understand the socio-demographic and economic conditions of any geographic area in the United States or Canada. **Explore SimplyMap today!**



Contact us for a webinar or free trial: [sales@geographicresearch.com](mailto:sales@geographicresearch.com) | 1.888.845.5064 x64

# NEW MAPS AND CARTOGRAPHIC MATERIALS

DAVID BERTUCA

UNIVERSITY OF BUFFALO

*“Earth is our only suitable habitat. Geography’s task is to discover and capture its horizons in order to understand how people live and work and utilize resources. This understanding is more urgently required than ever for all students because of new global realities; the interconnected, integrated, and interdependent character of our lives.”--Geography for Life: National Geography Standards, 1994, p. 238.*

Cartography and geography are essential to the current and future world. With constantly changing technology, lifestyles, and interactions among people and nations, maps are central to our survival.

Of course, we know this to be true. Convincing the rest of the world of this fact is another matter. Maps are taken for granted partly because they have become so ubiquitous. We are so used to seeing and using maps that they are almost invisible.

The best time to appreciate the value of a map is before you need one. For many, the moment they appreciate a map’s value is when it is not on hand.

We work with maps and know that all maps have value. We also are aware that once a map is produced, it has this value. Old maps and new, contain valuable data that may not be available anywhere else, or that requires a great deal of searching and reading to locate.

We also know that today, we face a world set against seeing this value. We are defending map collections against the belief that maps become obsolete and that there is no purpose other than direction finding in the present. This view, along with the belief that everything of value is online, presents us with a difficult task to preserve data and the potential knowledge that will be had in the future.

We are not alone in this struggle. Collections of all types of materials are having to justify their relevance and the need for their continued support. New technology does not have a mind. It provides tools and new formats for information use. New technology is not a replacement for older formats. Sometimes we still need the old technology. As an analogy: when air travel became practical, we did not eliminate automobiles.

Each technology and each format has its strengths and weaknesses. Each has its purpose. All materials have value and all should be supported and valued. My personal journey through life has been to critically think about the forms of information storage and retrieval and to understand the interaction of all facets, to be able to understand the universe. This is essential for today and for the future. Everything we do is interrelated and we must see this if we are to continue to grow and evolve.

In this context, I have reviewed and worked with the following selection of materials that I hope you will find worthwhile reading and for building your awareness of the continuing world of maps and geographic resources.

It's All on the Internet...

People are being trained to perceive that the entire data of the world is available on the web. Even those of us who know better, are searching the Internet, hoping that we can fill requests with digitized resources.

But, in a world where everything is so well covered, it is still true that everything is not available online. It isn't even available, period.

An article in the recent issue of the Virginia Quarterly Review (Winter 2017) should be of interest to the map universe. "Here Be Dragons: Finding the Blank Spaces in a Well-Mapped World" <http://www.vqronline.org/essays-articles/2017/01/here-be-dragons> is a good example of the fact that some places on earth are still uncharted and undocumented.



An explorer in Greenland uses satellite imagery that he plots onto charts, to navigate in a region that has not been properly mapped before. Especially true, is the changing landscape, from changes in climate. For places like Greenland, the topography changes daily.

The article gets beyond simple mapping needs. The author describes specific gaps in our map. For example, "only 17 percent of the ocean floor has been mapped with sonar." Given the expanse of our earth covered in water, this means that a major expanse of our world is mapped adequately.

Cartography is more than mapping. It is the interpretation and description of the physical world, plus the visualization of human interaction with the landscape.

The article discusses 3-D visualization processes and some of the complicating factors involved in correctly mapping the landscape. Changes in politics, technology, and time, affect our ability to properly map the world.

The article goes further, discussing the problems of mapping the universe. Black holes, along with other physical phenomena that cannot be seen, create difficulties for cartographers.

---



All of these and more factors mean that while we have produced a wealth of new data, there is still a lot that is uncharted, unseen, and not known. The article provides a view that emphasizes the essential nature of mapping to the world. As I constantly stress in every conversation, maps are not just for finding the route from one place to another. Maps are integral to every aspect of life and provide critical data for everything we do.

The article is worth reading by anyone from high school through adult learner. It will provide a starting point for discussions in many fields and will open your mind to concepts that could expand your own perception of modern reality.

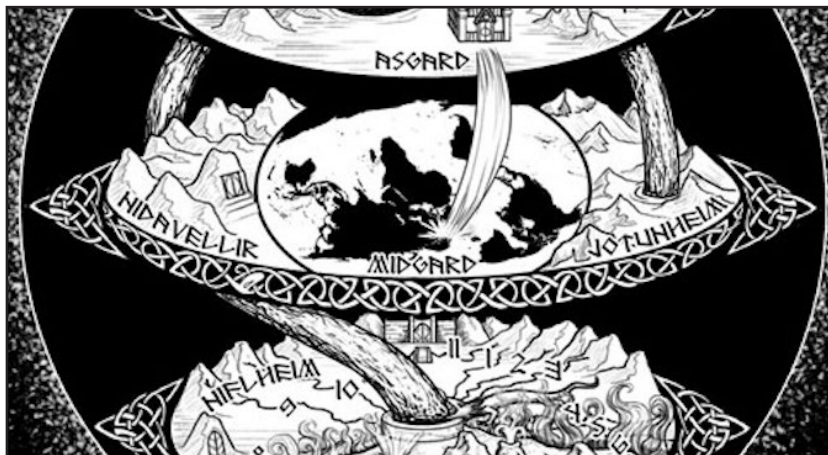
## Exhibits

### Worlds Imagined: The Maps of Imaginary Places Collection

<http://www.newswise.com/articles/view/669056/?sc=rsla>

Texas A&M University Libraries opened an exhibit featuring a new fantasy map collection:

*Authors who create elaborate fantasy worlds, like J.R.R. Tolkien's Middle-earth and George R.R. Martin's Westeros, often provide maps to guide readers through these imaginary lands. Texas A&M University's Cushing Memorial Library and Archives invites visitors to explore fantasy maps with the new exhibit, Worlds Imagined: The Maps of Imaginary Places Collection.*



The collection is part of a combined effort by the Map Collection and the Science Fiction & Fantasy Research Collection. Contained are maps by fantasy authors and novelists, among others.

The exhibit runs from February 10 through October 10.

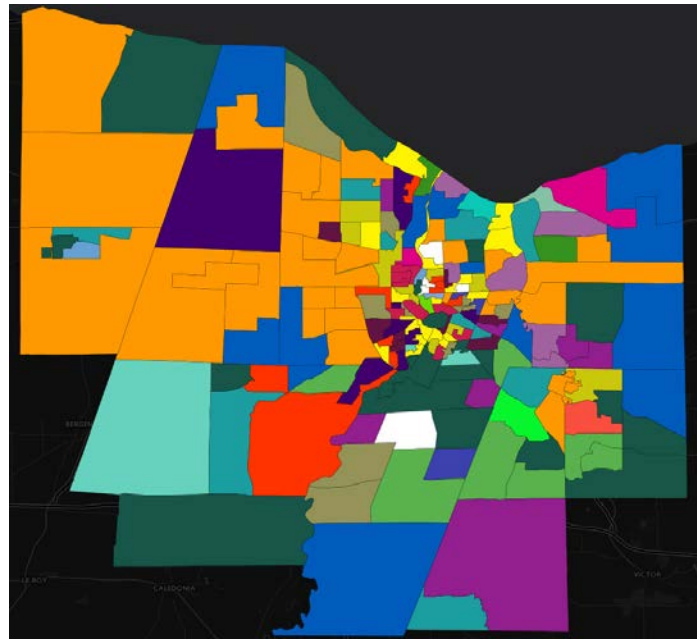
## Web Resources

### Languages of Rochester

[https://randyhsmithjr.carto.com/viz/36f2a41f-0298-4b20-9382-a95137962bec/embed\\_map](https://randyhsmithjr.carto.com/viz/36f2a41f-0298-4b20-9382-a95137962bec/embed_map)

The wealth of statistical data in the world, combined with GIS applications, allows for the first time, an efficient way to make visualizations of the world. This statement is not new, but when I see examples of creative data visualizations, it is worth seeing.

This map shows Monroe County, N.Y. in relation to the diversity of languages that exist in the population. The city of Rochester and its surrounding towns, contain a cacophony of spoken languages, by hundreds of people (from more than 125 nations).



Randy Howard Smith, Jr., a “digital cartographer,” has designed his GIS around the primary language spoken at home, for each of the 191 census tracts of the county. Over 61,000 residents of Monroe County were born outside of the United States, making it a richly diverse population (view a spreadsheet that lists these populations <https://docs.google.com/spreadsheets/d/1sxY-6TQ2yXyephF3JqSWU17qKY7YVsaBSTSI0xeL2g0/edit?usp=sharing>).

This is an excellent example of census data being used to make a dramatic visualization. For collections serving GIS students and professionals, it is worth visiting.

Additional mapping applications by Smith, Jr. are found on his website <http://www.rhsmithjr.com/> along with links to news articles describing some of his work.

### **MassGIS Data: Trains**

<http://www.mass.gov/anf/research-and-tech/it-serv-and-support/application-serv/office-of-geographic-information-massgis/datalayers/trains.html>

Railroad maps of any kind are valuable tools for a variety of disciplines and when collections or maps or compilations of geocoded data on rail systems appear, it is always good to be aware of them.

This web resource is a GIS that contains map data for Massachusetts railroads, both historically and current. It includes “active passenger, freight, and MBTA Commuter Rail and Rapid Transit railways, along with abandoned rail lines and railroad beds now used as rail trails. In many instances there is more than one track per rail line, and rail yards and spurs are included.” It is based on USGS 1:100k scale Digital Line Graphs, and other materials.

The Trains GIS is part of the comprehensive MassGIS (Office of Geographic Information) system of the state of Massachusetts <http://www.mass.gov/anf/research-and-tech/it-serv-and-support/application-serv/office-of-geographic-information-massgis/>. Much of the data and maps contained at this site may be downloaded and used in GIS projects. MassGIS provides a kind of clearinghouse for state level datasets.

The GIS viewer for this map [http://maps.massgis.state.ma.us/map\\_ol/oliver.php?lyrs=Detailed%20Features~Basemaps\\_MassGISBasemapWithLabels2~|Active%20and%20Proposed%20Commuter%20Rail%20Lines~massgis:GISDATA.TRAINS\\_RTE\\_TRAIN~GISDATA.TRAINS\\_RTE\\_TRAIN::Default|Active%20and%20Proposed%20Commuter%20Rail%20Stations%20Labels~massgis:GISDATA.TRAINS\\_NODE~GISDATA.TRAINS\\_NODE::Active\\_and\\_Proposed\\_Stations\\_Labels|Active%20and%20Proposed%20Commuter%20Rail%20Stations~massgis:GISDATA.TRAINS\\_NODE~GISDATA.TRAINS\\_NODE::Active\\_and\\_Proposed\\_Stations|Commuter%20Rail%20Stations%20Labels~massgis:GISDATA.TRAINS\\_NODE~GISDATA.TRAINS\\_NODE::Labels|Commuter%20Rail%20Stations~massgis:GISDATA.TRAINS\\_NODE~GISDATA.TRAINS\\_NODE::Default|Commuter%20Rail%20Lines~massgis:GISDATA.TRAINS\\_RTE\\_TRAIN~GISDATA.TRAINS\\_RTE\\_TRAIN::Regular&bbox=-73.08813354496249,41.46578160894859,-69.7070910644956,42.91861994713517&coordUnit=m&measureUnit=m&base=MassGIS%20Statewide%20Basemap&center=-7947945.845618,5190441.0884975&zoom=9&opacity=1,1,1,1,1,1,1,1&baseO=1&filt=undefined|undefined|undefined|undefined|undefined|undefined|undefined](http://maps.massgis.state.ma.us/map_ol/oliver.php?lyrs=Detailed%20Features~Basemaps_MassGISBasemapWithLabels2~|Active%20and%20Proposed%20Commuter%20Rail%20Lines~massgis:GISDATA.TRAINS_RTE_TRAIN~GISDATA.TRAINS_RTE_TRAIN::Default|Active%20and%20Proposed%20Commuter%20Rail%20Stations%20Labels~massgis:GISDATA.TRAINS_NODE~GISDATA.TRAINS_NODE::Active_and_Proposed_Stations_Labels|Active%20and%20Proposed%20Commuter%20Rail%20Stations~massgis:GISDATA.TRAINS_NODE~GISDATA.TRAINS_NODE::Active_and_Proposed_Stations|Commuter%20Rail%20Stations%20Labels~massgis:GISDATA.TRAINS_NODE~GISDATA.TRAINS_NODE::Labels|Commuter%20Rail%20Stations~massgis:GISDATA.TRAINS_NODE~GISDATA.TRAINS_NODE::Default|Commuter%20Rail%20Lines~massgis:GISDATA.TRAINS_RTE_TRAIN~GISDATA.TRAINS_RTE_TRAIN::Regular&bbox=-73.08813354496249,41.46578160894859,-69.7070910644956,42.91861994713517&coordUnit=m&measureUnit=m&base=MassGIS%20Statewide%20Basemap&center=-7947945.845618,5190441.0884975&zoom=9&opacity=1,1,1,1,1,1,1,1&baseO=1&filt=undefined|undefined|undefined|undefined|undefined|undefined|undefined) is a multiple layer system that allows for detailed descriptions of all rail systems throughout the state, along with relevant associated data, such as census and cultural features. In addition, current commuter train stations are indicated.

The layers include all sorts of themes from environment, geology, infrastructure, physical resources, and others. The base map shows topography and relief, but can be overlaid with a long list of orthoimagery from several providers and for a range of years.

This map system is more than a railroad route map. The depth of the layers is quite thorough so that you could use this to view many themes not related to railroads. For example, turn on the layer for “libraries” and you will see the location of every library in Massachusetts, coded by type (e.g., public, academic, school). There is a layer showing all the ice skating rinks in the state, as well as layers for fire stations, farmers markets, and other attributes. The list of layers is broad and will suit visualizations for a variety of activities.

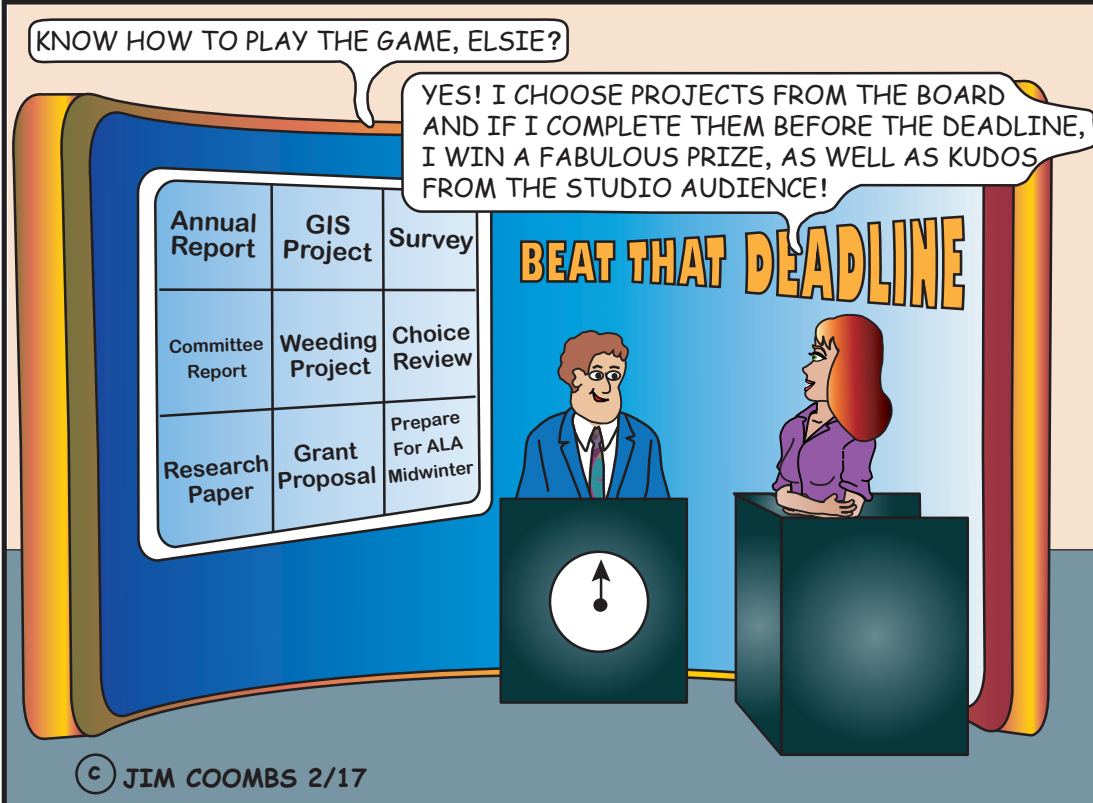
It can be used by college students, professionals, and community organizations to analyze and prepare maps for a wide range of uses. Be sure to save this link, as well as the link to MassGIS.

## Conclusion

In the interest of saving space for Mid-Winter reports and discussions, I have kept this column brief for this issue. Thank you for continuing to read and show interest in what I find. I am reading some interesting new works now that I will describe this year and hope to keep your attention and enthusiasm for the spatial creations to come.–DJB



# Great Moments In Map Librarianship by Jim Coombs



© JIM COOMBS 2/17